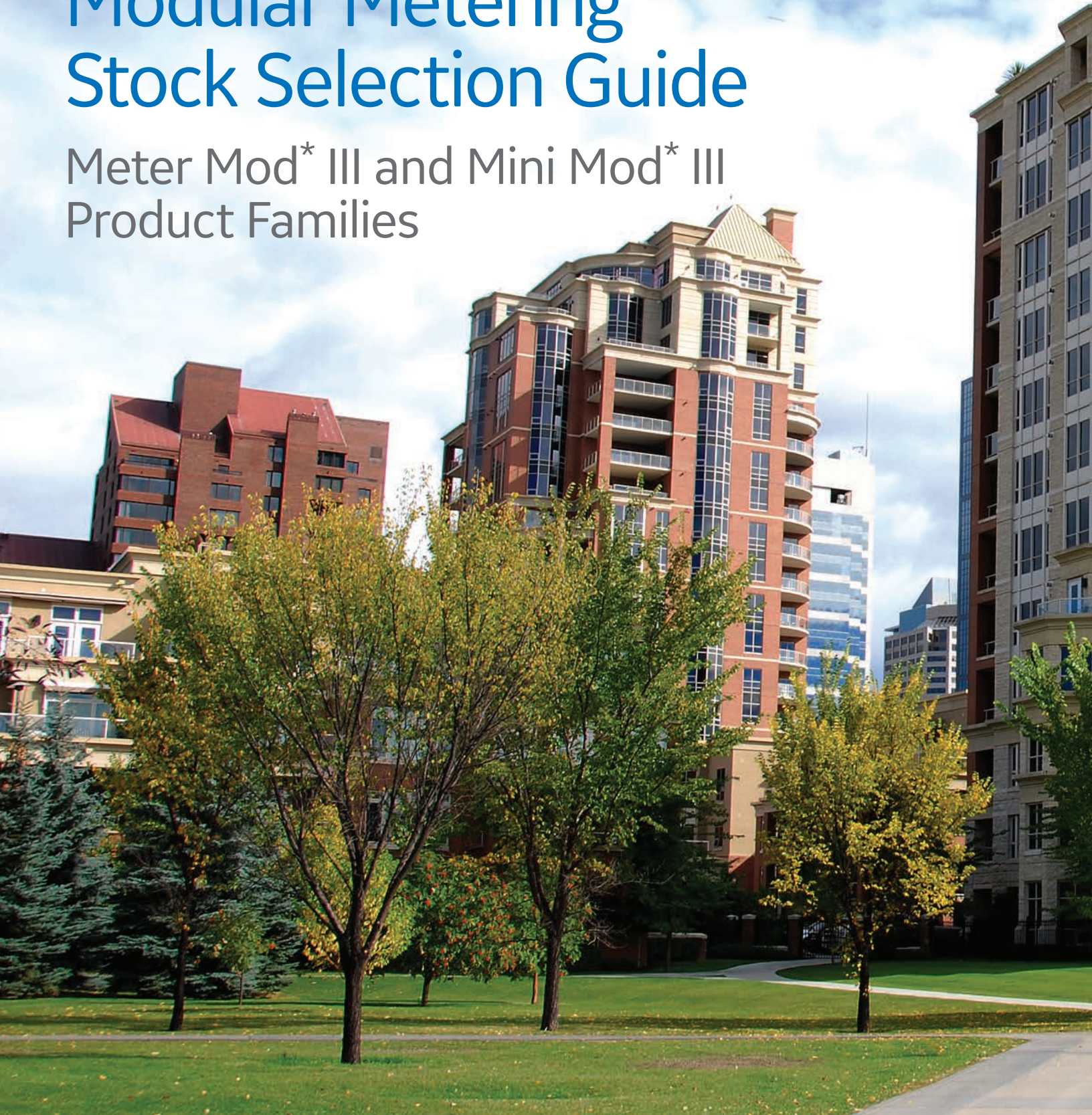




# Modular Metering Stock Selection Guide

Meter Mod\* III and Mini Mod\* III  
Product Families



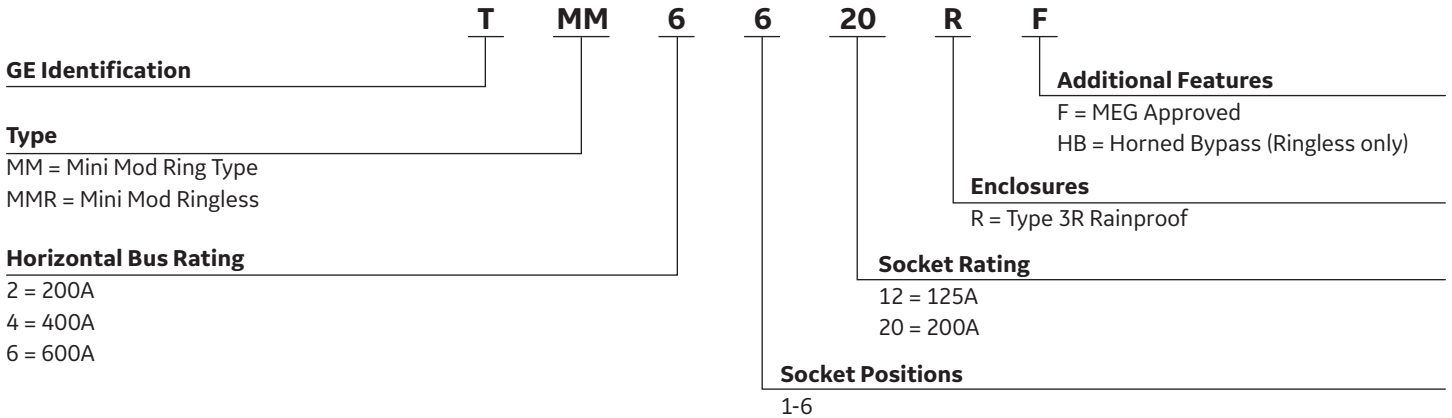
# Modular Metering Stock Selection Guide

Table of Contents	Page No.
Nomenclature	3
Main Breaker Module, Single-Phase, 3 Wire, 120/240 Vac	4
Main Breaker Module, Single-Phase, 3 Wire, 120/240 Vac with Arc Reduction Means	4
Main Breaker Module, Three-Phase, 4 Wire, 208Y/120 Vac or Three-Phase, 4 Wire, 120/240V Delta Hi-Leg	5
Main Breaker Module, Three-Phase, 4 Wire, 208Y/120 Vac or Three-Phase, 4 Wire, 120/240V Delta Hi-Leg with Arc Reduction Means	5
Main Breaker Module Accessories: Alternate Rating Plugs and Shunt Trips	6
Main Fusible Switch Module, Single-Phase, 3 Wire 120/240 Vac	7
Main Fusible Switch Module, Three-Phase, 4 Wire 208Y/120 Vac	7
Main Fusible Switch Modules - Fuses and Compression Lugs	8
Main Lug Module Single-Phase, 3 Wire 120/240 Vac	9
Main Lug Module Three-Phase, 4 Wire 208Y/120 Vac	9
Meter Stack Modules, Residential, Single-Phase, 800 Amp Horizontal Bussing, 125 & 200A Sockets	10
Meter Stack Modules, Residential, Single-Phase, 800 Amp Horizontal Bussing, 125 & 200A Sockets - MEG Approved	11
Meter Stack Modules, Residential, Single-Phase, 1200 Amp Horizontal Bussing, 125 & 200A Sockets	11
Meter Stack Modules, Residential, Single-Phase, 1200 Amp Horizontal Bussing, 125 & 200A Sockets - MEG Approved	12
Tenant Main Breakers for 1PH Residential Meter Modules (800A & 1200A Horizontal Bussing)	13
Meter Mod III - Residential Meter Stacks - Field Installed Accessories	14
Meter Stack Modules, Commercial, Single-Phase, 225A/400A Ringless Sockets w/Lever Bypass	15
Tenant Main Breakers for 1PH Commercial Meter Stack Modules (1200A Horizontal Bussing)	16
Meter Stack Modules, Commercial, Three-Phase, 225A/400A Ringless Sockets w/ Lever Bypass	17
Tenant Main Breakers for 3PH Commercial Meter Stack Modules (1200A Horizontal Bussing)	18
Meter Mod III - Commercial Meter Stacks - Field Installed Accessories	19
Mini Mod III Ring -Type and Ringless	19
Mini Mod III Ring -Type and Ringless - MEG Approved 125A & 200A Sockets	20
Tenant Main Breakers for Mini Mod Product Family	21
Mini Mod III Field Installed Accessories	22
Other Publications and References	24

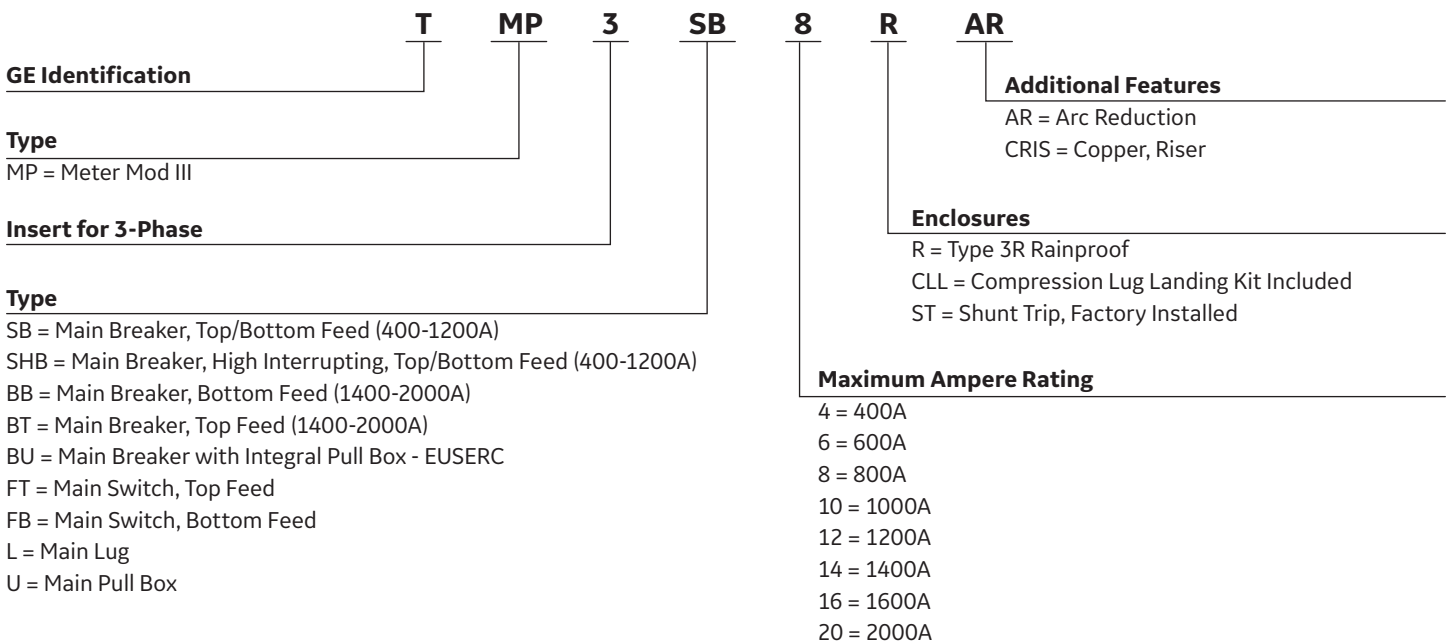


# Modular Metering Stock Selection Guide

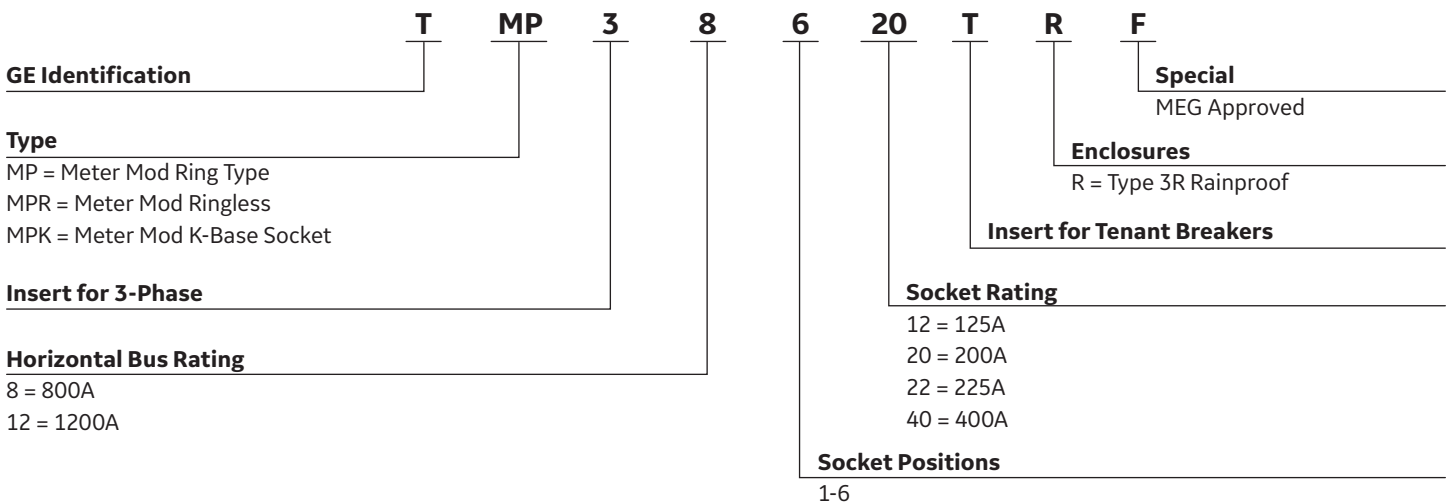
## Mini Mod III Nomenclature



## Meter Mod III - Main Nomenclature



## Meter Stack Nomenclature



# Modular Metering Stock Selection Guide

## Main Breaker Module, Single-Phase, 3 Wire 120/240 Vac

- Breaker included. 80% Rated MCB
- Single-phase mains have a neutral, A-phase, B-phase and ground and may be connected to three-phase horizontal bus stacks. However, output is only single-phase.
- All mains are required to be center feed only when main breaker is greater than horizontal bus amps

Catalog Number	Main Ampere Rating	IC Rating Max kAIC	Feed Location	110-240Vac Shunt Trip	Main Breaker Frame	Main Wire Size AWG/kcmil Cu/Al - Phase	Main Wire Size AWG/kcmil Cu/Al - Neutral
TMP SB4R	400	65	Bottom	No	SGH400	Al: (2) 2/0-500 or (1) 6-600 Cu: 2/0-400 or (1) 6-600	(2) 2 -600
TMP SHB4R		100					
TMP SB6R	600	65	Bottom	No	SGH600	Al: (2) 2/0-500 or (1) 6-600 Cu: 2/0-400 or (1) 6-600	(2) 2 -600
TMP SHB6R		100					
TMP SB8R	800	65	Bottom	No	SKH800	Al/Cu (3) 3/0-500 <sup>1</sup>	(4) 250-500 <sup>2</sup>
TMP SB10R	1000	65	Bottom	No	SKH1200	Al: (4) 250-500 Cu: (4) 250/350 <sup>1</sup>	(4) 250-500 <sup>2</sup>
TMP SB12R <sup>4</sup>	1200	65	Bottom	No	SKH1200	Al: (4) 250-500 Cu: (4) 250/350 <sup>1</sup>	(4) 250-500 <sup>2</sup>
TMP BB14R <sup>3</sup>	1400	100	Bottom	No	RG	(4) 500-1000 kcmil	(4) 250-500
TMP BT14R <sup>3</sup>			Top		RG	(4) 500-1000 kcmil	Al/Cu (4) 500-1000
TMP BB16R <sup>3</sup>	1600	100	Bottom	No	RG	Al/Cu (4) 500-1000 kcmil	Al/Cu (4) 500-1000
TMP BB16RST <sup>3</sup>			Bottom	Yes			
TMP BT16R <sup>3</sup>			Top	No			
TMP BT16RST <sup>3</sup>			Top	Yes			
TMP BT20R <sup>3</sup>			Top	No			
TMP BB20R <sup>3</sup>	2000	100	Bottom	No	RG	(6) #2-600 kcmil	(6) #2-600 kcmil

<sup>1</sup>Optional lug TCAL124 field installed wire range (3) 300-750 kcmil.

<sup>2</sup>Optional neutral lug field installed wire range (3) 1/0-750 kcmil. Lug kit part number TMPL750.

<sup>3</sup>Fixed Rating Plug not Field adjustable.

<sup>4</sup>To meet NEC 2014 Arc Energy Reduction (Section 240.87), please use a 1175A rating plug. Product number SPRK1200A1175, order separately

## Main Breaker Module, Single-Phase, 3 Wire 120/240 Vac with Arc Reduction Means

- Breaker included. 80% Rated MCB
- Single-phase mains have a neutral, A-phase, B-phase and ground and may be connected to three-phase horizontal bus stacks. However, output is only single-phase.
- All mains are required to be center feed only when main breaker is greater than horizontal bus amps
- The main breaker in this section has an arc reduction means that satisfies the requirement of NEC 2014 Section 240.87

Amperage	Phase	IC Rating Max kAIC	Feed	Catalog Number	Description	Main Wire Size AWG/kcmil Cu/Al - Phase	Main Wire Size AWG/kcmil Cu/Al - Neutral
400A to Less Than 1200A	1		Top or Bottom	Use Standard Part #. Code effects only 1200A and greater			
1200A	1		Top or Bottom	Use 1400 or 1600A and advise GE sales rep to make trip unit 1200A			
1400A	1	100	Bottom	TMPBB14RAR	1400A 1Ph Main Breaker Bottom Feed - Arc Reduction	(4) 500-1000	(4) 250-500
1600A	1	100	Bottom	TMPBB16RAR	1400A 1Ph Main Breaker Bottom Feed - Arc Reduction	(4) 500-1000	(4) 500-1000
			Top	TMPBT16RAR	1600A 1Ph Main Breaker Top Feed - Arc Reduction		
2000A	1	100	Bottom	TMPBB20RAR	2000A 1Ph Main Breaker Bottom Feed - Arc Reduction	(6) #2-600	(6) #2-600

# Modular Metering Stock Selection Guide

## Main Breaker Module, Three-Phase, 4 Wire 208Y/120 Vac or Three-Phase, 4 Wire, 120/240V Delta Hi-Leg

- Breaker included. 80% Rated MCB.
- All mains are required to be center feed only when main breaker is greater than horizontal bus amps

Catalog Number	Main Ampere Rating	IC Rating Max kAIC	Feed Location	110-240 Vac Shunt Trip	Main Breaker Frame	Main Wire Size AWG/kcmil Cu/Al -Phase	Main Wire Size AWG/kcmil Cu/Al - Neutral			
TMP3SB4R	400	65	Bottom	No	SGH400	Al: (2) 2/0-500 or (1) 6-600 Cu: 2/0-400 or (1) 6-600	(2) 2-600			
TMP3SHB4R		100								
TMP3SB6R	600	65	Bottom	No	SGH600	Al: (2) 2/0-500 or (1) 6-600 Cu: 2/0-400 or (1) 6-600	(2) 2-600			
TMP3SHB6R		100								
TMP3SB8R	800	65	Bottom	No	SGH800	Al/Cu (3) 3/0-500 <sup>1</sup>	(4) 250-500 <sup>2</sup>			
TMP3SB10R	1000	65	Bottom	No	SGH1200	Al: (4) 250-500 Cu: (4) 250/350 <sup>1</sup>	(4) 250-500 <sup>2</sup>			
TMP3SB12R <sup>4</sup>	1200	65	Bottom	No	SKH1200	Al: (4) 250-500 Cu: (4) 250/350 <sup>1</sup>	(4) 250-500 <sup>2</sup>			
TMP3BB14R <sup>3</sup>	1400	100	Bottom	No	RG	(4) 500-1000 kcmil	(4) 500-1000			
TMP3BT14R <sup>3</sup>			Top							
TMP3BB16R <sup>3</sup>	1600	100	Bottom	No	RG	Al/Cu (4) 500-1000	Al/Cu (4) 500-1000			
TMP3BB16RCLL <sup>3</sup>				No	RG	Compression Lugs	Compression Lugs			
TMP3BB16RST <sup>3</sup>				Yes						
TMP3BT16R <sup>3</sup>			Top	No	RG	Al/Cu (4) 500-1000	Al/Cu (4) 500-1000			
TMP3BT16RST <sup>3</sup>				Yes						
TMP3BT20R <sup>3</sup>			2000	100	Top	No	RG	(6) #2 - 600 kcmil	(6) #2-600 kcmil	
TMP3BB20R <sup>3</sup>	Bottom									
TMP3BB20RCLL <sup>3</sup>	Bottom	RG			Compression Lugs					Compression Lugs
TMP3BB20RST <sup>3</sup>	Bottom	Yes			RG					(6) #2-600 kcmil

<sup>1</sup>Optional lug TCAL124 field installed wire range (3) 300-750 kcmil.

<sup>2</sup>Optional neutral lug field installed wire range (3) 1/0-750 kcmil. Lug kit part number TMPL750.

<sup>3</sup>Fixed Rating Plug not Field adjustable.

<sup>4</sup>To meet NEC 2014 Arc Energy Reduction (Section 240.87), please use a 1175A rating plug. Product number SPRK1200A1175, order separately

## Main Breaker Module, Three-Phase, 4 Wire 208Y/120 Vac or Three-Phase, 4 Wire, 120/240V Delta Hi-Leg with Arc Reduction Means

- Breaker included. 80% Rated MCB.
- All mains are required to be center feed only when main breaker is greater than horizontal bus amps
- The main breaker in this section has an arc reduction means that satisfies the requirement of NEC 2014 Section 240.87

Amperage	Phase	IC Rating Max kAIC	Feed	Catalog Number	Description	Main Wire Size AWG/kcmil CU/AL - Phase	Main Wire Size AWG/kcmil CU/AL - Neutral
400A to Less Than 1200A	3		Top or Bottom	Use Standard Part #. Code effects only 1200A and greater			
1200A	3		Top or Bottom	Use 1400 or 1600A and advise GE sales rep to make trip unit 1200A			
1400A	3	100	Bottom	TMP3BB14RAR	1400A 3Ph Main Breaker Bottom Feed - Arc Reduction	(4) 500-1000	(4) 500-1000
			Top	TMP3BT14RAR	1400A 3Ph Main Breaker Top Feed - Arc Reduction		
1600A	3	100	Bottom	TMP3BB16RAR	1600A 3Ph Main Breaker Bottom Feed - Arc Reduction	(4) 500-1000	(4) 500-1000
			Top	TMP3BT16RAR	1600A 3Ph Main Breaker Top Feed - Arc Reduction		
2000A	3	100	Top	TMP3BT20RAR	2000A 3Ph Main Breaker Top Feed - Arc Reduction	(6) #2-600	(6) #2-600
			Bottom	TMP3BB20RAR	2000A 3Ph Main Breaker Bottom Feed - Arc Reduction		

# Modular Metering Stock Selection Guide

## Main Breaker Module Accessories

### Main Breaker Modules Alternate Rating Plugs—Field installed

Breaker Frame Rating (Amps)	Trip Rating (Amps)	Rating Plug Part No.
400A	225	SRPG400A225
	250	SRPG400A250
	300	SRPG400A300
	350	SRPG400A350
600A	250	SRPG600A250
	300	SRPG600A300
	350	SRPG600A350
	400	SRPG600A400
	450	SRPG600A450
	500	SRPG600A500
800A	300	SRPK800A300
	400	SRPK800A400
	500	SRPK800A500
	600	SRPK800A600
	700	SRPK800A700
1200A	600	SRPK1200A600
	700	SRPK1200A700
	800	SRPK1200A800
	900	SRPK1200A900
	1000	SRPK1200A1000
	1175	SRPK1200A1175

### Shunt Trip—Field Installed

For use on all Main Breaker Modules

Shunt Trip	Catalog Number
120 Vac	SAST1
240 Vac	SAST2

# Modular Metering Stock Selection Guide

## Main Fusible Switch Module, Single-Phase, 3 Wire 120/240 Vac

- Single-phase mains have a neutral, A-phase, B-phase group and may be connected to three-phase horizontal bus stacks. However, output is only single-phase
- All mains are required to be center feed only when the main fusible switch rating is greater than the horizontal bus amperage rating

Catalog Number	Main Ampere Rating	IC Rating (Max) kAIC	Wire Entry	Main Wire Size AWG/kcmil Cu/Al -Phase	Main Wire Size AWG/kcmil Cu/Al - Neutral	Stud Sets per Phase and Neutral	Fuse Not Included. Order Separately.	Compression Lug Landing Kit
TMPFT4R	400	100	Top	(1) 1/0-750 or (2) 1/0-300	(1) 1/0-750 or (2) 1/0-300	1	Class T only	Order Separately
TMPFT6R	600			(2) 2-600	(2) 2-600			
TMPFT8R	800			(4) 3/0-750	(4) 3/0-750			
TMPFT12R	1200			(4) 2-500	(4) 2-500		Class L only. Bolted Pressure Switch	
TMPFB4R	400	100	Bottom	(1) 1/0-750 or (2) 1/0-300	(1) 1/0-750 or (2) 1/0-300	1	Class T only	Order Separately
TMPFB6R	600			(2) 2-600	(2) 2-600			
TMPFB8R	800			(4) 3/0-750	(4) 3/0-750			
TMPFB12RT <sup>1</sup>	1200	100	Bottom	(4) 2-500	(4) 2-500		see footnote 1	
TMPFB12R <sup>2</sup>							see footnote 2	

<sup>1</sup>TMPFB12RT is a standard fusible switch that uses only Class T fuses. This unit is less robust and smaller than the TMPFB12R, but is significantly less expensive.

<sup>2</sup>TMPFB12R is a bolted pressure switch that uses only Class L fuses. This unit is larger and more robust than the TMPFB12RT, but more expensive.

## Main Fusible Switch Module, Three-Phase, 4 Wire 208Y/120 Vac

- Fuses not included.
- All mains are required to be center feed only when the main fusible switch rating is greater than the horizontal bus amperage rating

Catalog Number	Main Ampere Rating	IC Rating (Max) kAIC	Wire Entry	Main Wire Size AWG/kcmil Cu/Al -Phase	Main Wire Size AWG/kcmil Cu/Al - Neutral	Stud Sets per Phase and Neutral	Fuse Not Included. Order Separately.	Compression Lug Landing Kit
TMP3FT4R	400	100	Top	(1) 1/0-750 or (2) 1/0-300	(1) 1/0-750 or (2) 1/0-300	1	Class T only	TMP3F8CLL1 Order Separately
TMP3FT6R	600			(2) 2-600	(2) 2-600			
TMP3FT8R	800			(4) 3/0-750	(4) 3/0-750			
TMP3FT12R	1200			(4) 4-600	(4) 4-600		Class L only. Bolted Pressure Switch	
TMP3FT16R	1600			(6) 4-600	(6) 4-600			
TMP3FT20R	2000			(8) 4-600	(8) 4-600			
TMP3FB4R	400	100	Bottom	(1) 1/0-750 or (2) 1/0-300	(1) 1/0-750 or (2) 1/0-300	1	Class T only	TMP3F8CLL1 Order Separately
TMP3FB6R	600			(2) 2-600	(2) 2-600			
TMP3FB8R	800			(4) 3/0-750	(4) 3/0-750			
TMP3FB12R <sup>4</sup>	1200			(4) 4-600	(4) 4-600		Class L only. Bolted Pressure Switch	
TMP3FB12RT <sup>3</sup>	1200			(4) 2-600	(4) 2-600			
TMP3FB16R	1600			(6) 4-600	(6) 4-600			
TMP3FB16RST <sup>5</sup>	1600			(6) 4-600	(6) 4-600			
TMP3FB20R	2000			(8) 4-600	(8) 4-600			
TMP3FB20RST <sup>5</sup>	2000			(8) 4-600	(8) 4-600			

<sup>3</sup>TMP3FB12RT is a standard fusible switch that uses only Class T fuses. This unit is less robust and smaller than the TMP3FB12R, but is significantly less expensive.

<sup>4</sup>TMP3FB12R is a bolted pressure switch that uses only Class L fuses. This unit is larger and more robust than the TMP3FB12RT, but more expensive.

<sup>5</sup>Product numbers ending in "ST" have shunt tripping style bolted pressure switch.

# Modular Metering Stock Selection Guide

## Main Fusible Switch Modules—Fuses and Compression Lugs

### Class T Fuses

Rated at 200K @ 240V

Frame Size	Ampere Rating	Catalog Number
400	250	TFUSE250
	300	TFUSE300
	250	TFUSE350
	400	TFUSE400
600	500	TFUSE500
	600	TFUSE600
800	800	TFUSE800
1200	1200	A3T1200

### Class L Fuses

Rated at 200K @ 240V

Ampere Rating	Catalog Number
600	A4BY600
650	A4BY650
700	A4BY700
750	A4BY750
800	A4BY800
900	A4BY900
1000	A4BY1000
1100	A4BY1100

Ampere Rating	Catalog Number
1200	A4BY1200
1350	A4BY1350
1400	A4BY1400
1500	A4BY1500
1600	A4BY1600
1800	A4BY1800
2000	A4BY2000

### Compression Lugs

The following UL listed crimp connectors may be used

Wire size (CU only)	Mac	T & B	Burndy	Panduit
250 kcmil	MSB250-8N MRB250-8N	54275 54868BE	YA29-2LN YA29-LN	LCC250-12
300 kcmil	MSB300-8N MRB300-8N	54280 54870BE	YA30-2LN YA30-LN	LCC300-12
350 kcmil	MSB350-8N MRB350-8N	54282 54872BE	YA31-2LN YA31-LN	LCC350-12
400 kcmil	MSB400-8N MRB400-8N	54874BE	YA32-2LN YA32-LN	LCC400-12
500 kcmil	MSB500-8N MRB500-8N	54286 54876BE	YA34-2LN YA34-LN	LCC500-12
600 kcmil	MSB600-8N MRB600-8N	54289 54878BE	YA36-2LN YA36-LN	
700 kcmil		54291		
750 kcmil	MSB750-8N MRB750-8N	54223 54880BE	YA39-2LN YA39-LN	LCC750-12
Wire size (AL/CU)				
250 kcmil	MLB250-8N MULB250-8N	60256	YA29A3 YA29AY-2N	LAB250-12
300 kcmil	MLB300-8N MULB300-8N	60262	YA30A3 YA30AY-2N	LAB300-12
350 kcmil	MLB350-8N MULB350-8N	60267	YA31A3 YA31AY-2N	LAB350-12
400 kcmil	MLB400-8N MULB400-8N	60269	YA32A3 YA32AY-2N	LAB400-12
500 kcmil	MLB500-8N MULB500-8N	60273	YA34A3 YA34AY-2N	LAB500-12
600 kcmil	MLB600-8N MULB600-8N	60275	YA36A3 YA36AY-2N	LAB600-12
700 kcmil		60277		
750 kcmil			YA39A5	LAB750-12

Note: torque 1/2" nuts which attach crimp connectors to 45 ft.-Lb. (61 N-m)



# Modular Metering Stock Selection Guide

## Main Lug Module, Single-Phase, 3 Wire 120/240 Vac

- Lugs included.

Catalog Number	Main Ampere Rating	IC Rating <sup>1</sup> (Max) kAIC	Wire Entry	Mounting	Main Wire Size AWG/kcmil Cu/Al - Phase	Main Wire Size AWG/kcmil Cu/Al - Neutral	Stud Sets per Phase and Neutral	Compression Lug Landing Kit	
Use 3-Phase	400	100	Bottom/Top	End or Center					
Use 3-Phase	600								
TMPL8R	800				(2) 1/0-750 or (4) 1/0-300	(2) 1/0-750 or (4) 1/0-300	2	Order Separately	
TMPL12R	1200				(3) 1/0-750 or (6) 1/0-300	(3) 1/0-750 or (6) 1/0-300	3		
TMPL16R	1600	(6) 250-500	(6) 250-500	3					

<sup>1</sup>Limited to the lowest marked short circuit rating of the main and meter modules used.

## Main Lug Module, Three-Phase, 4 Wire 208Y/120 Vac

- Lugs included.

Catalog Number	Main Ampere Rating	IC Rating <sup>1</sup> (Max) kAIC	Wire Entry	Mounting	Main Wire Size AWG/kcmil Cu/Al - Phase	Main Wire Size AWG/kcmil Cu/Al - Neutral	Stud Sets per Phase and Neutral	Compression Lug Landing Kit
TMP3L4R	400	100	Bottom/Top	End or Center	(1) 6-600 or (2) 1/0-250	(1) 6-600 or (2) 1/0-250	1	Order Separately
TMP3L4RCU <sup>2</sup>								
TMP3L6R	600				(2) 250-500	(2) 250-500	1	
TMP3L6RCU <sup>2</sup>								
TMP3L8R	800				(2) 1/0-750 or (4) 1/0-300	(2) 1/0-750 or (4) 1/0-300	2	
TMP3L8RCU <sup>2</sup>								
TMP3L12R	1200				(3) 1/0-750 or (6) 1/0-300	(3) 1/0-750 or (6) 1/0-300	2	
TMP3L16R	1600				(6) 250-500	(6) 250-500	3	
TMP3L20R	2000	(8) 1/0-750	(8) 1/0-750	2				

<sup>1</sup>Limited to the lowest marked short circuit rating of the main and meter modules used.

<sup>2</sup>Copper based.

## Main Lug with Feed Through, Three Phase, 4 Wire / Single Phase, 3 Wire 120/240 Vac, 208Y/120 Vac

Catalog Number	Main Amperage	KAIC	Incoming Line	Outgoing Load	Stud Sets per Phase and Neutral	Compression Lug Landing Kit
TMP3L12RCRIS	1200A	100	(5) Up to 750 MCM per Phase/Neutral (AL/CU)	(5) Up to 750 MCM per Phase/Neutral (AL/CU)	2	-
TMP3L16RCRIS	1600A				2	-
TMP3L20RCRIS	2000A				(8) 1/0 - 750 MCM per Phase/Neutral (AL/CU)	(8) 1/0 - 750 MCM per Phase/Neutral (AL/CU)

# Modular Metering Stock Selection Guide

## Meter Stack Modules—Residential— Single Phase 800A Horizontal Bussing 125 & 200A Sockets

- 800 amp, 4 Wire Crossbus (Aluminum)
- UL Listed
- Front Accessible Field Phase Balancing by Meter Stack
- (1) 14-4 Equipment Ground per Socket, Factory Installed

Socket Amps	No. of Sockets	Catalog Number		
		Ring Type Socket	Ringless Type Socket (4 Jaw Socket Standard)	Ringless Type Socket (4 Jaw Socket Standard) Horned Bypass Factory Installed
125	2	TMP8212R <sup>1</sup>	TMPR8212R	TMPR8212RHB
	3	TMP8312R <sup>1</sup>	TMPR8312R	TMPR8312RHB
	4	TMP8412R <sup>1</sup>	TMPR8412R	TMPR8412RHB
	5	TMP8512R <sup>1</sup>	TMPR8512R	TMPR8512RHB
	6	TMP8612R <sup>1</sup>	TMPR8612R	TMPR8612RHB
200	2	TMP8220R <sup>1</sup>	TMPR8220R	TMPR8220RHB
	3	TMP8320R <sup>1</sup>	TMPR8320R	TMPR8320RHB
	4	TMP8420R <sup>1</sup>	TMPR8420R	TMPR8420RHB
	5	TMP8520R <sup>1</sup>	TMPR8520R	TMPR8520RHB
	5	TMP8520RBUS <sup>1,2</sup>	TMPR8520RBUS <sup>2</sup>	

<sup>1</sup>One snap-type, aluminum sealing ring (TSR5) per socket included

<sup>2</sup>BUS suffix indicates change to centerline of horizontal bussing from 28.88" to 41.01" from bottom of unit

- 800 amp, 4 Wire Cross bus (copper) - CON ED Approved
- UL Listed
- Front Accessible Field Phase Balancing by Meter Stack
- (1) 14-4 Equipment Ground per Socket, Factory Installed

Socket Amps	No. of Sockets	Factory Phase Balancing	Catalog Number	
			Ring Type Socket Factory Phase Balanced with Copper Bus	
			NEMA 1 Indoor Enclosure	NEMA 3R Outdoor Enclosure
125	2	AB	TMP8212AB	TMP8212RAB
		AC	TMP8212AC	TMP8212RAC
		BC	TMP8212BC	TMP8212RBC
	3	AB	TMP8312AB	TMP8312RAB
		AC	TMP8312AC	TMP8312RAC
		BC	TMP8312BC	TMP8312RBC
	4	AB	TMP8412AB	TMP8412RAB
		AC	TMP8412AC	TMP8412RAC
		BC	TMP8412BC	TMP8412RBC
	5	AB	TMP8512AB	TMP8512RAB
		AC	TMP8512AC	TMP8512RAC
		BC	TMP8512BC	TMP8512RBC

## Modular Metering Stock Selection Guide

### Meter Stack Modules—Residential— Single Phase— MEG Approved 800A Horizontal Bussing 125 & 200A Sockets

- 800 amp, 4 Wire Crossbus (Aluminum)
- UL Listed
- Front Accessible Field Phase Balancing by Meter Stack
- (1) 14-4 Equipment Ground per Socket, Factory Installed
- Meter Equipment Group Approved

These MEG approved units have an added cotter pin that eliminates failure of the metering stabs when the meter is plugged into the meter base.

Socket Amps	No. of Sockets	Ring Type Socket	Ringless Type Socket (4 Jaw Socket Standard)	Ringless Type Socket (4 Jaw Socket Standard) Horned Bypass Factory Installed
125	2	TMP8212RF <sup>1</sup>	TMPR8212RF	TMPR8212RHBF
	3	TMP8312RF <sup>1</sup>	TMPR8312RF	TMPR8312RHBF
	4	TMP8412RF <sup>1</sup>	TMPR8412RF	TMPR8412RHBF
	5	TMP8512RF <sup>1</sup>	TMPR8512RF	
	6	TMP8612RF <sup>1</sup>	TMPR8612RF	TMPR8612RF
200	2		TMPR8220RF	
	3	TMP8320RF <sup>1</sup>	TMPR8320RF	
	4	TMP8420RF <sup>1</sup>	TMPR8420RF	TMPR8420RHBF
	5		TMPR8520RF	

<sup>1</sup>One snap-type, aluminum sealing ring (TSR5) per socket included

### Meter Stack Modules—Residential— Single Phase 1200A Horizontal Bussing 125 & 200A Sockets

- 1200 amp, 4 Wire Crossbus (aluminum)
- UL Listed
- Front Accessible Field Phase Balancing by Meter Stack
- (1) 14-4 Equipment Ground per Socket, Factory Installed

Socket Amps	No. of Sockets	Catalog Number		
		Ring Type Socket	Ringless Type Socket (4 Jaw Socket Standard)	Ringless Type Socket (4 Jaw Socket Standard) Horned Bypass Factory Installed
125	2	TMP12212R <sup>1</sup>	TMPR12212R	TMPR12212RHB
	3	TMP12312R <sup>1</sup>	TMPR12312R	TMPR12312RHB
	4	TMP12412R <sup>1</sup>	TMPR12412R	TMPR12412RHB
	5	TMP12512R <sup>1</sup>	TMPR12512R	TMPR12512RHB
	6	TMP12612R <sup>1</sup>	TMPR12612R	TMPR12612RHB
200	2	TMP12220R <sup>1</sup>	TMPR12220R	TMPR12220RHB
	3	TMP12320R <sup>1</sup>	TMPR12320R	TMPR12320RHB
	4	TMP12420R <sup>1</sup>	TMPR12420R	TMPR12420RHB
	5	TMP12520R <sup>1</sup>	TMPR12520R	TMPR12520RHB
	5	TMP12520R <sup>1,2</sup>	TMPR12520RBUS <sup>2</sup>	TMPR12520RHBBUS <sup>2</sup>

<sup>1</sup>One snap-type, aluminum sealing ring (TSR5) per socket included

<sup>2</sup>BUS suffix indicates change to centerline of horizontal bussing from 28.88" to 41.01" from bottom of unit

# Modular Metering Stock Selection Guide

## Meter Stack Modules—Residential— Single Phase— MEG Approved 1200A Horizontal Bussing 125 & 200A Sockets

- 1200 amp, 4 Wire Crossbus (Aluminum)
- UL Listed
- Front Accessible Field Phase Balancing by Meter Stack
- (1) 14-4 Equipment Ground per Socket, Factory Installed
- Meter Equipment Group Approved

Socket Amps	No. of Sockets	Ring Type Socket	Ringless Type Socket (4 Jaw Socket Standard)	Ringless Type Socket (4 Jaw Socket Standard) Horned Bypass Factory Installed
125	4		TMPR12412RF	TMPR12412RHBF
	5		TMPR12512RF	TMPR12512RHBF
	6		TMPR12612RF	
200	4	TMP12420RF <sup>1</sup>	TMPR12420RF	TMPR12420RHBF
	5		TMPR12520RF	

<sup>1</sup>One snap-type, aluminum sealing ring (TSR5) per socket included

# Modular Metering Stock Selection Guide

## Tenant Main Breakers for 1PH Residential Meter Modules (800A & 1200A Horizontal Bussing)

### Tenant Main Breakers for 125A, 2 Pole Sockets

Amps	10kAIC	22kAIC	Wire Size
60	THQL2160	THHQL2160	(1) #8-#3 CU; #8-#3AL
70	THQL2170	THHQL2170	(1) #6-1/0 CU; #4-#1/0 AL
80	THQL2180	THHQL2180	
90	THQL2190	THHQL2190	
100	THQL21100	THHQL21100	(1) #2-2/0 CU; #2-2/0 AL
110	THQL21110	THHQL21110	—
125	THQL21125	THHQL21125	(1) #2-2/0 CU; #2-2/0 AL
125	TMQL21125SSF <sup>1</sup>	—	—

<sup>1</sup>Sub-Feed lug. No overcurrent protection.

### Tenant Main Breakers for 125A, 2 Pole Sockets

Amps	QL 42 kAIC	Wire Size	QA 65 kAIC	Wire Size
60	TMQL2160	#8-#1 (Cu) or #8-1/0 (Al)	TMQA2160	#8-2/0
70	TMQL2170		TMQA2170	
80	TMQL2180		TMQA2180	
90	TMQL2190		TMQA2190	
100	TMQL21100		TMQA2100	
110	—		TMQA2110	
125	TMQL21125	2/0 - #14	TMQA2125	

### Tenant Main Breakers for 200A, 2 Pole Sockets

Amps	10kAIC	22kAIC	Wire Size
100	TQD22100	THQD22100	(1) #1-300 CU; #1-300 AL
125	TQD22125	THQD22125	
150	TQD22150	THQD22150	
175	TQD22175	THQD22175	
200	TQD22200	THQD22200	

### Tenant Main Circuit Breakers for 200A, 2 Pole Sockets

Amps	QC 42 kAIC	QF 65 kAIC	QV 100 kAIC	Wire Size
60	TMQC22060MM	TMQF22060MM	TMQV22060MM	#6-4/0 <sup>2</sup>
70	TMQC22070MM	TMQF22070MM	TMQV22070MM	
80	TMQC22080MM	TMQF22080MM	TMQV22080MM	
90	TMQC22090MM	TMQF22090MM	TMQV22090MM	
100	TMQC22100MM	TMQF22100MM	TMQV22100MM	
110	TMQC22110MM	TMQF22110MM	TMQV22110MM	
125	TMQC22125MM	TMQF22125MM	TMQV22125MM	
150	TMQC22150MM	TMQF22150MM	TMQV22150MM	
175	TMQC22175MM	TMQF22175MM	TMQV22175MM	
200	TMQC22200MM	TMQF22200MM	TMQV22200MM	

<sup>2</sup>For 60A-200A 2P breakers use TMQV225L2 to get 300MCM terminals.

# Modular Metering Stock Selection Guide

## Meter Mod III Residential Meter Stacks Field Installed Accessories

### Steel Meter Socket Covers

Description		Catalog No.
Blank (fits bottom position only)	125 Amp	TMCB12B
	200 Amp	TMCB20B
Ringless (Field -converts ring-type to ringless)	125 amp top socket for 2 and 3 gang	TMCR12T
	125 amp for all other sockets	TMCR12
	200 amp for all sockets	TMCR20

### By-pass Kits

Description		Catalog No.
Manual Slider-Type (Ring Type Only) <sup>1</sup>	125 amp top socket for 2, 3, 5 and 6 gang	TMBPM12TA <sup>2</sup>
	125 amp for all other sockets	TMBPM12A <sup>2</sup>
	200 amp for all sockets	TMBPM20A <sup>2</sup>
Jumper Straps Type <sup>1</sup> (use with TMCA)		TMBPJ20 <sup>3</sup>
Cover Includes Jumper Strap Type-fits all (Ring Type Only)		TMBPC20 <sup>1</sup>
Horn-Type-fits all (Ringless Only) <sup>1</sup>		TMBPH20A <sup>3</sup>

### Miscellaneous

Description	Catalog No.
Lexan Meter socket Cover Plate (without tabs)	TMCA
Lexan Meter Socket Cover Plate	TMCP
Equipment Ground Bar, (6) 6-2/0	TMEG
Individual Meter Socket Barrier Kit (includes 6)	TMBR
Mounting Z-Rail, 4-foot	TMZR
Spacer, 4-inch, 4 cross bus rated 1200A	TMPS12
Elbow, 16-inch x 16-inch, 4 cross bus rated 1200A	TMPE12 <sup>4</sup>
Elbow, 12-inch x 12-inch, 4 cross bus rated 1200A	TMPE12A <sup>4</sup>
Anti-Inversion Clip	TMIC
Endwall	TM234BEW200
Endwall	TM56BEW200
TQD Breaker Mounting Kit. This is a replacement part. Units come with this part factory installed.	TMTQD3

<sup>1</sup>Not UL Listed.

<sup>2</sup>200 amps continuous.

<sup>3</sup>100 amps continuous.

<sup>4</sup>Indoor Type 1.

### Fifth Jaw Kits

Description	Catalog No.
Bused; 3, 6, or 9 o'clock mounting Order two for fifth and sixth jaw. Not suitable for 2-gang ring type	TM5JA
Isolated; 3 or 9 o'clock mounting	TM5JUA

### Sealing Rings

Description	Material	Catalog No.
Screw Type	Aluminum	TSR1
Snap Type	Stainless Steel	TSR3
Screw and Lock Type	Aluminum	TSR4
Snap Type	Aluminum (Standard)	TSR5

# Modular Metering Stock Selection Guide

## Meter Stack Modules—Commercial Single-Phase—225A/400A Ringless Sockets w/ Lever Bypass

- Single-Phase/3 Wire 120/240 Vac or Three-Phase, 4 Wire, Horizontal Bus, 208Y/120 Vac System Voltage
- 1200 amp, 4 Wire cross bus (aluminum)
- UL Listed
- Front Accessible Field Phase Balancing by Meter Socket
- (1) 14-2 Equipment Ground Kit per Socket, Factory Installed
- Only 225A and 400A Ringless Type Meter Stacks contain Lever Bypass
- 125A and 200A Meter Sockets do not contain Lever Bypass

### Ringless Type Socket with Lever Bypass. All units are 7-terminal except TMPK.

Socket Amps	No. of Sockets	Catalog Number	Factory Installed Fifth Jaw (TM5JA Bused)
225	1	TMPR12122R	Included
	2	TMPR12222R	
	3	TMPR12322R	
	4	TMPR12422R	
400	1	TMPR12140RB <sup>1,3</sup>	
	2	TMPR12240RB <sup>2,3</sup>	
	1	TMPK12140RB	
	1	TMPK12140RBA	

<sup>1</sup>One 400A tenant main breaker included.

<sup>2</sup>Two 400A tenant breakers included.

<sup>3</sup>Main Breaker Modules Alternate Rating Plugs table for alternate 400A Rating Plugs

# Modular Metering Stock Selection Guide

## Tenant Main Breakers for 1PH Commercial Meter Stack Modules (1200A Horizontal Bussing)

### Tenant Main Circuit Breakers for 225A, 2 Pole Sockets

Amps	10kAIC	Wire Size
15	TEB122015	(1) #14-3 CU; #12-1 AL
20	TEB122020	
25	TEB122025	
30	TEB122030	
35	TEB122035	
40	TEB122040	
45	TEB122045	
50	TEB122050	
60	TEB122060	
70	TEB122070	
80	TEB122080	
90	TEB122090	
100	TQD22100	(1) #1-300 CU; #1-300 AL
125	TQD22125	
150	TQD22150	
175	TQD22175	
200	TQD22200	
225	Use TMQV	

### Tenant Main Circuit Breakers for 225A, 2 Pole Sockets

Amps	22kAIC	Wire Size
100	THQD22100	(1) #1-300 CU; #1-300 AL
125	THQD22125	
150	THQD22150	
175	THQD22175	
200	THQD22200	
225	Use TMQV	

### Tenant Main Circuit Breakers for 200A/225A, 2 Pole Sockets

Amps	QC 42 kAIC	QF 65 kAIC	QV 100 kAIC	Wire Size
60	TMQC22060MM	TMQF22060MM	TMQV22060MM	#6-4/0 <sup>1</sup>
70	TMQC22070MM	TMQF22070MM	TMQV22070MM	
80	TMQC22080MM	TMQF22080MM	TMQV22080MM	
90	TMQC22090MM	TMQF22090MM	TMQV22090MM	
100	TMQC22100MM	TMQF22100MM	TMQV22100MM	
110	TMQC22110MM	TMQF22110MM	TMQV22110MM	
125	TMQC22125MM	TMQF22125MM	TMQV22125MM	
150	TMQC22150MM	TMQF22150MM	TMQV22150MM	
175	TMQC22175MM	TMQF22175MM	TMQV22175MM	
200	TMQC22200MM	TMQF22200MM	TMQV22200MM	
225	TMQC22225MM	TMQF22225MM	TMQV22225MM	

<sup>1</sup>For 60A-225A 2P breakers use TMQV225L2 to get 300MCM terminals.



# Modular Metering Stock Selection Guide

## Meter Stack Modules—Commercial Three-Phase, 225A/400A Ringless Sockets w/ Lever Bypass

- Three-Phase / 4 Wire, 240-120 Vac, Three-Phase / 4 Wire 208Y/120Vac
- 1200 amp, 4 Wire cross bus (aluminum)
- UL Listed
- Front Accessible Field Phase Balancing by Meter Socket
- (1) 14-2 Equipment Ground Kit per Socket, Factory Installed
- Swingaway Mounting Feet Factory Installed
- Only 225A and 400A Ringless Type Meter Sockets contain Lever Bypass
- 125A and 200A Meter Sockets do not contain Lever Bypass

### Ringless Type Socket with Lever Bypass. All units are 7-terminal except TMPK.

Socket Amps	No. of Sockets	Catalog Number	Factory Installed Seventh Jaw (7 Terminal)
225	1	TMPR312122R <sup>1</sup>	Included
	2	TMPR312222R <sup>1</sup>	
	3	TMPR312322R <sup>1</sup>	
	4	TMPR312422R <sup>1</sup>	
400	1	TMPR312140TR <sup>1</sup>	
	1	TMPR312140RB <sup>2</sup>	
	2	TMPR312240RB <sup>2</sup>	
	1	TMPK312140RB	
	1	TMPK312140RBA	

<sup>1</sup>Shipped from the factory as 7-jaw units (7 terminal.)

<sup>2</sup>400 Amp tenant breaker included, 65 kAIC

# Modular Metering Stock Selection Guide

## Tenant Main Breakers for 3PH Commercial Meter Stack Modules (1200A Horizontal Bussing)

### Tenant Main Circuit Breakers for 200A/225A, 3 Pole Sockets

Amps	10kAIC	Wire Size
15	TEB132015	(1) #14-3 CU; #12-1 AL
20	TEB132020	
25	TEB132025	
30	TEB132030	
35	TEB132035	
40	TEB132040	
45	TEB132045	
50	TEB132050	
60	TEB132060	
70	TEB132070	
80	TEB132080	
90	TEB132090	
100	TEB132100	(1) #3-3/0 CU; #1-3/0 AL
125	TQD32125	(1) #1-300 CU; #1-300 AL
150	TQD32150	
175	TQD32175	
200	TQD32200	
225	Use TMQC	

### Tenant Main Circuit Breakers for 200A/225A, 3 Pole Sockets

Amps	22kAIC	Wire Size
100	THQD32100	(1) #1-300 CU; #1-300 AL
125	THQD32125	
150	THQD32150	
175	THQD32175	
200	THQD32200	
225	Use TMQC	—

### Tenant Main Circuit Breakers for 200A/225A, 3 Pole Sockets

Amps	QC 42 kAIC	QF 65 kAIC	QV 100 kAIC	Wire Size
60	TMQC32060	TMQF32060	TMQV32060	#6-4/0 <sup>1</sup>
70	TMQC32070	TMQF32070	TMQV32070	
80	TMQC32080	TMQF32080	TMQV32080	
90	TMQC32090	TMQF32090	TMQV32090	
100	TMQC32100	TMQF32100	TMQV32100	
110	TMQC32110	TMQF32110	TMQV32110	
125	TMQC32125	TMQF32125	TMQV32125	
150	TMQC32150	TMQF32150	TMQV32150	
175	TMQC32175	TMQF32175	TMQV32175	
200	TMQC32200	TMQF32200	TMQV32200	
225	TMQC32225	TMQF32225	TMQV32225	

<sup>1</sup>For 60A-225A 3P breakers use TMQV225L3 to get 300MCM terminals.

# Modular Metering Stock Selection Guide

## Meter Mod III Commercial Meter Stacks Field Installed Accessories

Description	Catalog No.
TEB Breaker Mounting Kit	TMTEB
Barrel Lock Bracket and Guard Kit	TMBL <sup>1</sup>
Bypass Kit, Totalizing Jumper Type	TMBPT320 <sup>1,2</sup>
Replacement Phase Balancing Jumper Kit	TMPJ31 <sup>1</sup>
Blank Meter Socket Cover, fits all positions	TMCB322A
Individual Meter Socket Barrier Kit, includes 6	TMBR3
Insulator for Lever By-Pass Handle	TMHN
Mounting Z Rail, 4-foot	TMZR
Spacer, 4-inch, 4 cross bus rated 1200A	TMPS12
Elbow, 16-inch x 16-inch, 4 cross bus rated 1200A	TMPE12 <sup>2</sup>
Elbow, 12-inch x 12-inch, 4 cross bus rated 1200A	TMPE12A <sup>3</sup>

<sup>1</sup>Not UL Listed.

<sup>2</sup>180 amps continuous.

<sup>3</sup>Indoor, Type 1, for inside corners only.

## Mini Mod III Ring-Type and Ringless

- UL Listed (Panelboards No. 67)
- Indoor/Outdoor construction
- Ring-Type and Ringless Meter Sockets
- Bondable Neutral, Strap included
- 11-inch Mounting Z Rail included
- Swing Away Mounting Feet factory installed
- Underground, incoming feed only

Socket Amps	No. of Sockets	Main Ampere Rating	Ring-Type Socket <sup>4</sup>	Ring-Type Socket (5 Jaw Socket Standard) Horned Bypass Factory Installed	Ringless Type Socket	Ringless Type Socket (5 Jaw Socket Standard) Horned Bypass Factory Installed	Main Wire Size AWG/kcmil Cu/Al - Phase	Service Ground	Equipment Ground
125	2	200	TMM2212R <sup>5</sup>	TMM2212RHB <sup>5</sup>	TMMR2212R <sup>5</sup>	TMMR2212RHB <sup>5</sup>	(1) 6-300	6-2/0	14-4
	3	400	TMM4312R	TMM4312RHB	TMMR4312R	TMMR4312RHB	(1) 6-600 or (2) 2/0-250	4-300	
	4	400	TMM4412R	TMM4412RHB	TMMR4412R	TMMR4412RHB			
	5	600	TMM6512R	TMM6512RHB	TMMR6512R	TMMR6512RHB	(2) 250-500		
	6	600	TMM6612R	TMM6612RHB	TMMR6612R	TMMR6612RHB			
200	2	400	TMM4220R		TMMR4220R	TMMR4220RHB	(2) 250-500	6-2/0	14-4
	3	600	TMM6320R	TMM6320RHB	TMMR6320R	TMMR6320RHB		4-300	
	4	600	TMM6420R	TMM6420RHB	TMMR6420R	TMMR6420RHB			
	5	600	TMM6520R		TMMR6520R	TMMR6520RHB			
	6	600	TMM6620R		TMMR6620R	TMMR6620RHB			

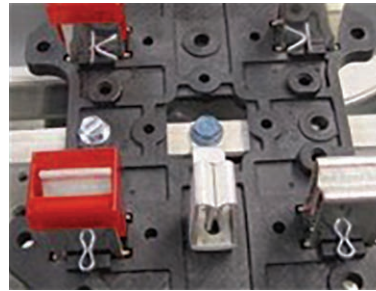
<sup>4</sup>One snap-type, aluminum sealing ring (TSR5) per socket included

<sup>5</sup>May be fed from overhead. Use hub TC300.

# Modular Metering Stock Selection Guide

## Mini Mod III Ring-Type and Ringless - MEG Approved 125A & 200A Sockets

- UL Listed (Panelboards No. 67)
- Indoor/Outdoor construction
- Ring-Type and Ringless Meter Sockets
- Bondable Neutral, Strap included
- 11-inch Mounting Z Rail included
- Swing Away Mounting Feet factory installed
- Underground, incoming feed only



These MEG approved units have an added cotter pin that eliminates failure of the metering stabs when the meter is plugged into the meter base.

Socket Amps	No. of Sockets	Main Ampere Rating	Ring-Type Socket <sup>1</sup>	Ringless Socket (5th Jaw Socket Standard)	Main Wire Size AWG/kcmil Cu/Al - Phase	Service Ground	Equipment Ground
125	2	200	TMM2212RF <sup>2</sup>	TMMR2212RF <sup>2</sup>	(1) 6-300	6-2/0	14-4
	3	400	TMM4312RF	TMMR4312RF	(1) 6-600 or (2) 2/0-250	4-300	
	4	400	TMM4412RF	TMMR4412RF			
	5	600	TMM6512RF	TMMR6512RF	(2) 250-500		
	6	600	TMM6612RF	TMMR6612RF			
200	2	400	Use TMM6320R	TMMR4220RF	(2) 250-500	6-2/0	14-4
	3	600	TMM6320RF	TMMR6320RF		4-300	
	4	600	TMM6420RF	TMMR6420RF			
	5	600	Use Ringless or Meter Mod III	TMMR6520RF			
	6	600	Use Ringless or Meter Mod III	TMMR6620RF			

<sup>1</sup>One snap-type, aluminum sealing ring (TSR5) per socket included.

<sup>2</sup>May be fed from overhead. Use hub TC300.

# Modular Metering Stock Selection Guide

## Tenant Main Breakers for Mini Mod Product Family

### Tenant Main Breakers for 125A, 2 Pole Sockets

Amps	10kAIC	22kAIC	Wire Size
60	THQL2160	THHQL2160	(1) #8- #3 CU; #8- #3AL
70	THQL2170	THHQL2170	(1) #6-1/0 CU; #4-#1/0 AL
80	THQL2180	THHQL2180	
90	THQL2190	THHQL2190	
100	THQL21100	THHQL21100	(1) #2-2/0 CU; #2-2/0 AL
110	THQL21110	THHQL21110	—
125	THQL21125	THHQL21125	(1) #2-2/0 CU; #2-2/0 AL
125	TMQL21125SSF <sup>1</sup>	—	—

<sup>1</sup>Sub-Feed lug. No overcurrent protection.

### Tenant Main Breakers for 125A, 2 Pole Sockets

Amps	QL 42 kAIC	Wire Size	QA 65 kAIC	Wire Size
60	TMQL2160	#8-#1 (Cu) or #8-1/0 (Al)	TMQA2160	#8-2/0
70	TMQL2170		TMQA2170	
80	TMQL2180		TMQA2180	
90	TMQL2190		TMQA2190	
100	TMQL21100		TMQA2100	
110	—		TMQA2110	
125	TMQL21125	2/0 - #14	TMQA2125	

### Tenant Main Breakers for 200A, 2 Pole Sockets

Amps	10kAIC	22kAIC	Wire Size
100	TQD22100	THQD22100	(1) #1-300 CU; #1-300 AL
125	TQD22125	THQD22125	
150	TQD22150	THQD22150	
175	TQD22175	THQD22175	
200	TQD22200	THQD22200	

### Tenant Main Circuit Breakers for 200A, 2 Pole Sockets

Amps	QC 42 kAIC	QF 65 kAIC	QV 100 kAIC	Wire Size
60	TMQC22060MM	TMQF22060MM	TMQV22060MM	#6-4/0 <sup>2</sup>
70	TMQC22070MM	TMQF22070MM	TMQV22070MM	
80	TMQC22080MM	TMQF22080MM	TMQV22080MM	
90	TMQC22090MM	TMQF22090MM	TMQV22090MM	
100	TMQC22100MM	TMQF22100MM	TMQV22100MM	
110	TMQC22110MM	TMQF22110MM	TMQV22110MM	
125	TMQC22125MM	TMQF22125MM	TMQV22125MM	
150	TMQC22150MM	TMQF22150MM	TMQV22150MM	
175	TMQC22175MM	TMQF22175MM	TMQV22175MM	
200	TMQC22200MM	TMQF22200MM	TMQV22200MM	

<sup>2</sup>For 60A-200A 2P breakers use TMQV225L2 to get 300MCM terminals.

# Modular Metering Stock Selection Guide

## Mini Mod III Field Installed Accessories

### By-pass Kits

Description	Catalog No.	
Manual Slider-Type (Ring Type Only) <sup>1</sup>	125 amp top socket for 2, 3, 5 and 6 gang	TMBPM12TA
	125 amp for all other sockets	TMBPM12A
	200 amp for all sockets	TMBPM20A <sup>2</sup>
Jumper Straps Type <sup>1</sup> (use with TMCA)	TMBPJ20 <sup>4</sup>	
Cover Includes Jumper Strap Type-fits all (Ring Type Only) <sup>3</sup>	TMBPC20 <sup>4</sup>	
Horn-Type-fits all (Ringless Only) <sup>1</sup>	TMBPH20A	

### Compression Lug Landing Kit

Description	Catalog No.
600 amp	TMM6CLL

Includes 3 pads each with 2 threaded stud connections (and hardware) for compression or mechanical lugs with NEMA 2-hole bolt configuration (lugs not furnished). Not suitable for 2-gang.

### Steel Meter Socket Covers

Description	Catalog No.	
Blank (fits bottom position only)	125 Amp	TMCB12B
	200 Amp	TMCB20B
Ringless (Field -converts ring-type to ringless)	125 amp top socket for 2 and 3 gang	TMCR12T
	125 amp for all other sockets	TMCR12
	200 amp for all sockets	TMCR20

### Miscellaneous

Description	Catalog No.
Lexan Meter socket Cover Plate (without tabs)	TMCA
Lexan Meter Socket Cover Plate	TMCP
Equipment Ground Bar, (6) 6-2/0	TMEG
Individual Meter Socket Barrier Kit (includes 6)	TMBR
Mounting Z-Rail, 4-foot	TMZR
Lug Kit for (3) 4/0 cable	TMPAL40

<sup>1</sup>100 amps continuous.

<sup>2</sup>For top socket on TMM4220R, order TMBPM20TA.

<sup>3</sup>200 amps continuous.

<sup>4</sup>Not UL Listed.

### Semi-Flush Kits

Description	Catalog No.	
125A Sockets	2 gang	TMM12SF2
	3 and 4 gang	TMM12SF4
	5 and 6 gang	TMM12SF6
200A Sockets	2 gang	TMM20SF2
	3 and 4 gang	TMM20SF4
	5 and 6 gang	TMM20SF6

### Fifth Jaw Kits

Description	Catalog No.
Bussed; 3, 6, or 9 o'clock mounting Order two for fifth and sixth jaw. Not suitable for 2-gang ring type	TM5JA
Isolated; 3 or 9 o'clock mounting	TM5JUA

### Sealing Rings

Description	Material	Catalog No.
Screw Type	Aluminum	TSR1
Snap Type	Stainless Steel	TSR3
Screw and Lock Type	Aluminum	TSR4
Snap Type	Aluminum (Standard)	TSR5



## Other Publications and References

Refer to these publications and resources for additional information about our products:

Pub No.	Title
DET-008	UL Component Recognized Series-Connected Ratings
DET-388	Renewal Parts
DET-395	Construction and Details
DET-838	Residential Electronic Circuit Interrupters
DET-843	Houses to High Rises
DET-848	Modular Metering Application Guide
DET-860	Modular Metering Application Guide: Mini Mod III Product Family

Visit our website: [www.geindustrial.com/products/modular-metering](http://www.geindustrial.com/products/modular-metering) for links to the above publications and additional information such as time current curves, outline and dimensional drawings, installation instructions, application and technical information.

For questions about any of our modular metering products, please e-mail us at [epis.modular.metering@abb.com](mailto:epis.modular.metering@abb.com)