



PowerMark Gold™ Spa & Pool Panel

Safety, convenience and value for your pool, hot tub or whirlpool



- GFCI protection for pools and spas as required by NEC 680.44
- Expandable with up to four additional circuits
- Two versions — 50A or 60A 2-pole GFCI breaker installed
- Factory-installed neutral and ground bar included
- Weatherproof enclosure allows bottom or top feed (raintight hub included)

- Meets NEC #680.44

NEC #680.44 Spas and Hot Tubs Protection

Except as otherwise provided in this section, the outlet(s) that supplies a self-contained spa or hot tub, a packaged spa or hot tub equipment assembly or a field-installed spa or hot tub shall be protected by a ground-fault circuit interrupter.

- 120/240V ac, single-phase, 3-wire, 125A main lugs
- UL Listed (Panelboards No. 67)
- Type 3R outdoor enclosure
- Suitable for use as service entrance equipment when installed in accordance with the National Electrical Code (NEC)

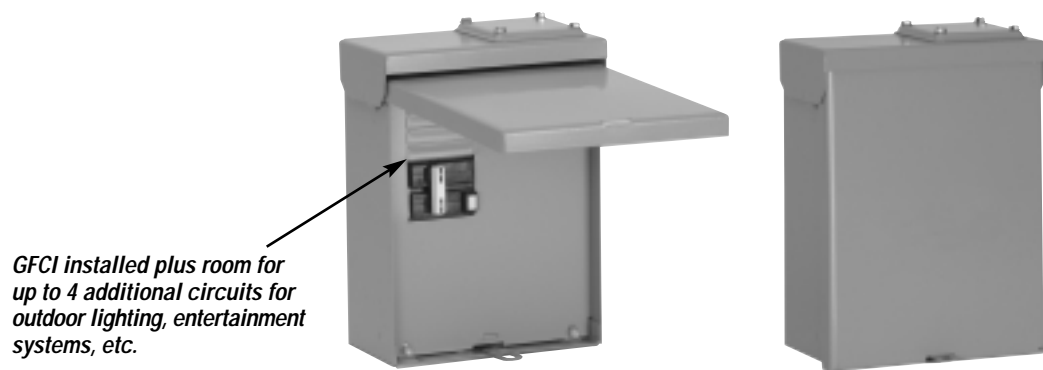
PowerMark Gold™ Spa & Pool Panel

With GE's PowerMark Gold Spa & Pool Panel, supplying power and protection to your spa, pool or other outdoor area is simple and economical.

It comes with the ground fault circuit interrupter already installed, and it provides spaces for up to four additional breakers for other needs.

In addition, it comes with installed neutral and ground bars and the raintight hub for either top or bottom feed.

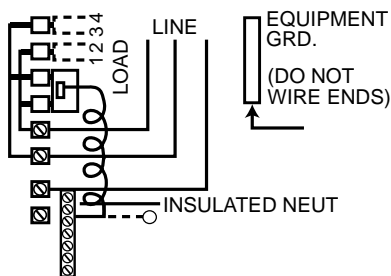
- 125 amps, main lug only
- 120/240V ac, single-phase, 3-wire
- 50- or 60-amp GFCI installed
- Up to 4 additional circuits available



Main Lug Amperage	GFCI* Breaker Amperage	Additional Breaker Spaces		Dimensions (inches)			Cat. No.
		1" THQL	1/2" THQP	H	W	D	
125	50	2	4	10.25	7.75	4.00	TL412R250GF
125	60	2	4	10.25	7.75	4.00	TL412R260GF

* 5mA trip level

Typical Wiring Diagram



General Electric Company
41 Woodford Avenue, Plainville, CT 06062
www.GEIndustrial.com

© 2004 General Electric Company

DET-385 0404