

1. Description of the project

Country:	Belgium
Localisation:	Antwerpen
Customer:	Alcatel
Project:	ASAM-C (Advanced Services Access Manager Outdoor Cabinet)
Scope:	Repowering Unit for the Alcatel xDSL Outdoor Street Cabinet.

2. Requirement of the customer

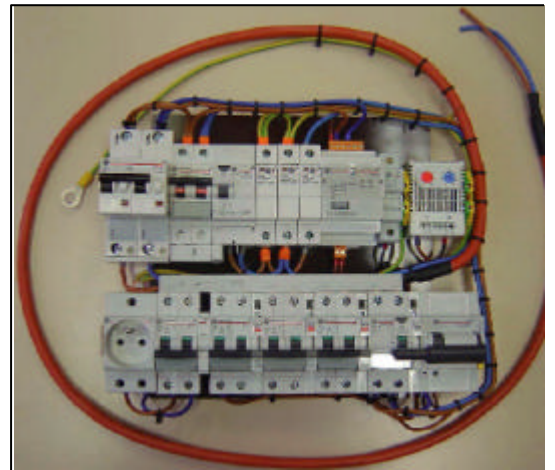
- Solution provider; co-engineering, testing and production of the power supply unit
- Meet high quality standards and technical specs, especially on EMC compatibility and heat dissipation
- Accessibility to test facilities and expertise in the qualification and certification process
- Worldwide presence with one point of contact

3. Why a GE solution

- Co-Engineering, design-in and expertise in providing technical solution
- Alcatel Audit demonstrated GE's Quality Processes, Products and Services
- Access to GE Testing & Certification Lab
- Worldwide presence with one point of contact

4. Key Technical Features

- Guaranteed functioning at ambient temperature from -45°C up to 65°C
- Automatic reconnection system after surge or ground fault
- MCB S90 guarantees high total selectivity
- Motor controlled 30mA RCCD
- Surge arrester 25KV
- Fault monitoring & signalisation



5. General Architecture

