



### Approvals / Marking



### Standards

EN/IEC 60670-22

### Features

#### Flex-o-Box Junior

##### Technical data

- Suitable for surface mounting
- 2.5 mm<sup>2</sup> - 500V
- IP65 protection degree
- Standards and approvals  
CEBEC: NBN C 68-685-2-0  
NBN C68-685-1  
KEMA: IEC 60670
- Colour: RAL 7035
- Material: resists the 650°C incandescent wire test
- Halogen-free<sup>(1)</sup>
- Operating temperature: -5°C to +60°C
- Total insulation: ☐
- IK07

##### Eight flexible entries

- 7 x Ø 20 in the side wall
- 1 x Ø 20 in the back
- Suitable for cable max. Ø 13 mm
- Suitable for tubes Ø 16 and Ø 20

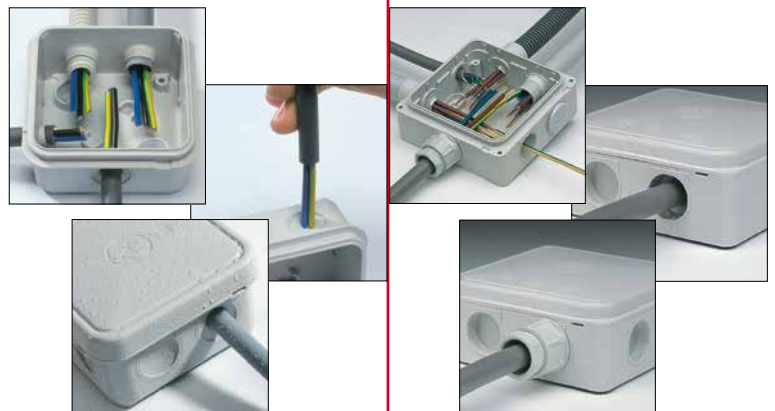
#### Flex-o-Box JB<sup>6</sup>

##### Technical data

- Suitable for surface mounting
- 6 mm<sup>2</sup> - 500V
- IP65 protection degree
- Standards and approvals:  
CEBEC: NBN C68-685-2-0  
NBN EN 60998-1  
KEMA: IEC 60670
- Colour: RAL 7035
- Material: resists the 650°C incandescent wire test
- Halogen-free<sup>(1)</sup>
- Operating temperature: -5°C to +60°C
- Total insulation: ☐
- IK07

##### Nine flexible entries



- 7 x M20 in the side wall
- 2 x Ø 20 mm max. entries in the back of the base
- Suitable for cable max. Ø 13 mm
- Suitable for tubes Ø 16 and Ø 20
- Suitable for cable seals M20 (10mm min. thread length), max. Torque 2.5 Nm. Cable Ø up-to 8mm.








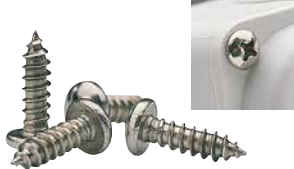
Dimensional drawings ● Page I.10

(1) Halogens are not intentionally added and are not expected to be present.

## Flex-o-Box

		Ref. No.	Pack.
	<b>Junior</b> Junction box 2.5 mm <sup>2</sup> Junction box 2.5 mm <sup>2</sup> (34 pieces in a red polybox basket)	600656	10/100
		600311	1
	<b>JB<sup>6</sup></b> Junction box 6 mm <sup>2</sup> Junction box 6 mm <sup>2</sup> (24 pieces in a grey polybox basket)	600651	10/100
		600310	1

## Accessories

for Junior and JB <sup>6</sup>		only for JB <sup>6</sup>		
	<b>Terminal block</b>	<b>600950</b>	30	
	6 mm <sup>2</sup> - 500V - pin-type			
	5-terminal blocks			
	Possible connections per terminal:			
	6x1.5 mm <sup>2</sup>	2x6 mm <sup>2</sup>		
	4x2.5 mm <sup>2</sup>	2x10 mm <sup>2</sup>		
	3x4 mm <sup>2</sup>			
	<b>Terminal strip</b>	<b>600650</b>	20/200	
	6 mm <sup>2</sup> - 500V - hole-type			
	5-terminal strips			
	Possible connections per terminal:			
	6x1.5 mm <sup>2</sup>	3x4 mm <sup>2</sup>		
	4x2.5 mm <sup>2</sup>	2x6 mm <sup>2</sup>		
				