

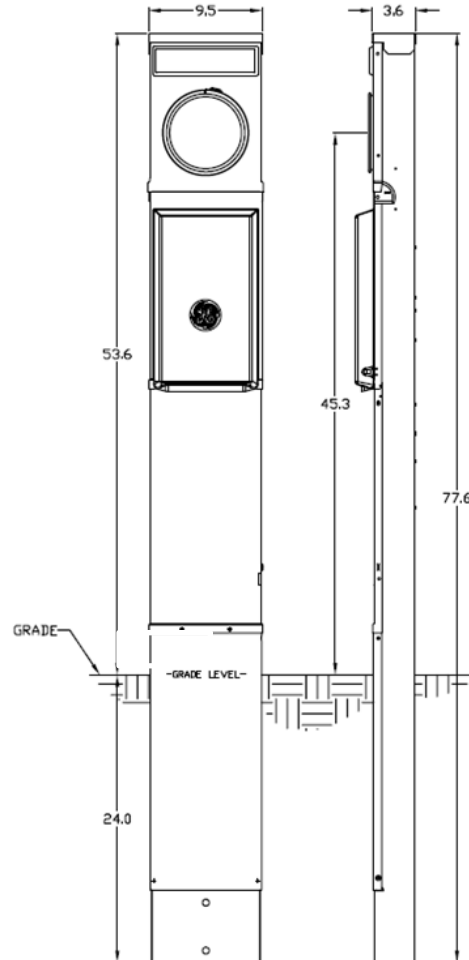
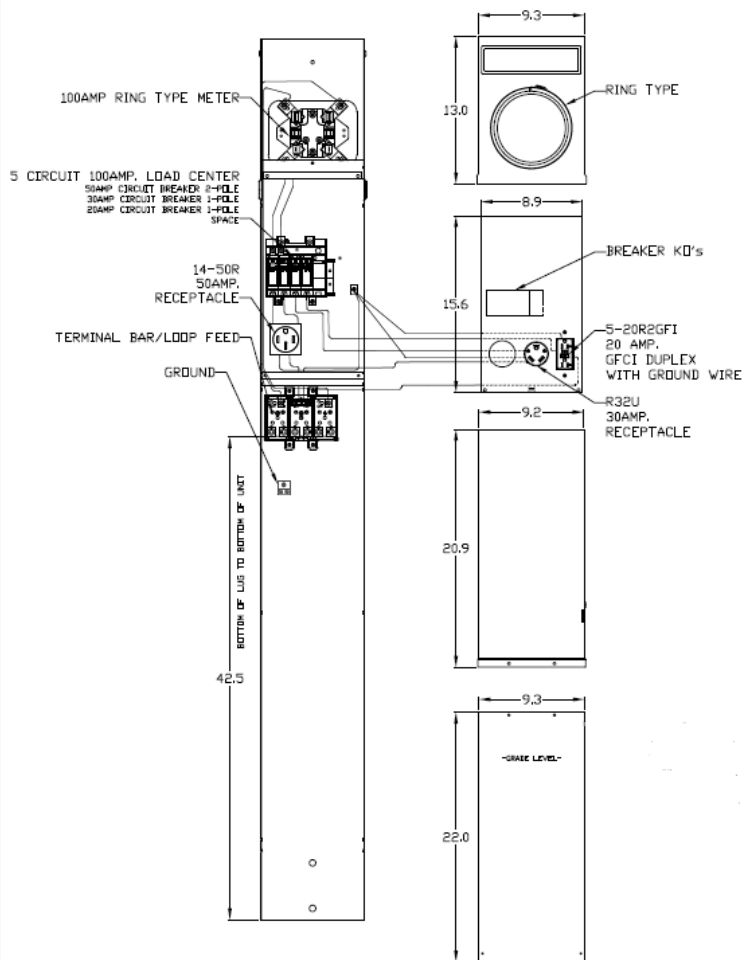
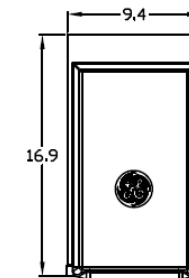
**Front View Interior**

**Front View External Cover**

**Front View Exterior**

**Right Side View**

**Main Breaker External Cover**



**Wire Range Size**

| CONNECTOR                                   | COPPER       |        | ALUMINUM     |        |
|---|--------------|--------|--------------|--------|
|   | SOLID        | STRAND | SOLID        | STRAND |
| LINE  | ---          | 6-1/0  | ---          | 6-1/0  |
| LOAD  | 14-10        | 14-10  | ---          | ---    |
| NEUTRAL                                     | 14-4         | 14-4   | 14-4         | 14-4   |
| POST LINE CONNECTORS SUITABLE FOR LOOP FEED | #6-350 KCMIL |        | #6-350 KCMIL |        |
| EQUIP. GRND, POST                           | 14-2/0       | 14-2/0 | 14-2/0       | 14-2/0 |

**NOTES: EARTH BURIAL POST**



imagination at work

GE RV EQUIP-100A-MLO-RING TYPE-50A,30A&20A RECEPT  
EARTH BURIAL POST-SINGLE SIDE-UNLIGHTED-N3R-G90

| CAT NO     | DWG DATE   | REV # |
|------------|------------|-------|
| GE1LM532ES | 05/24/2016 | 01    |