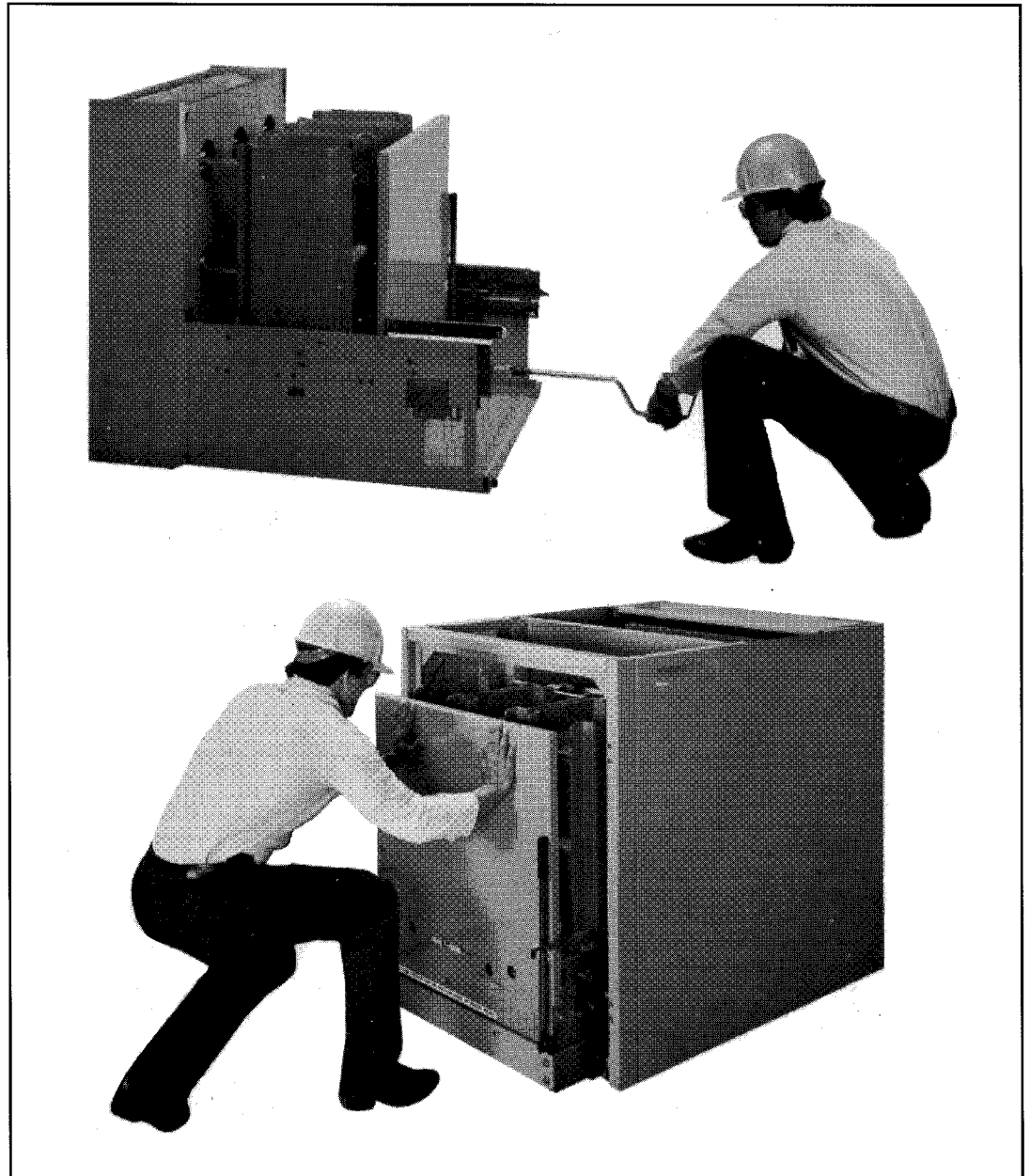




## ***OEM Frame Elements***

For Type VBB POWER/VAC® Breakers



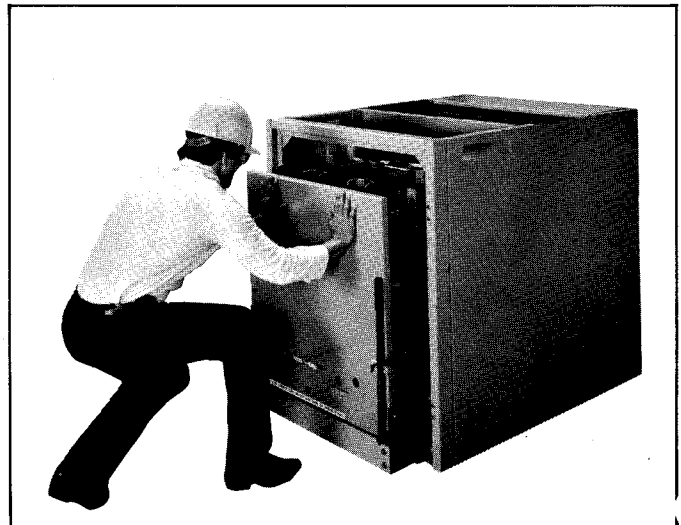
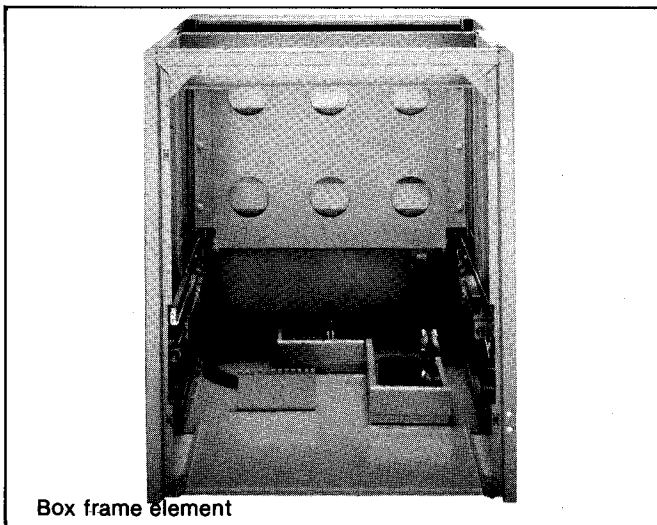
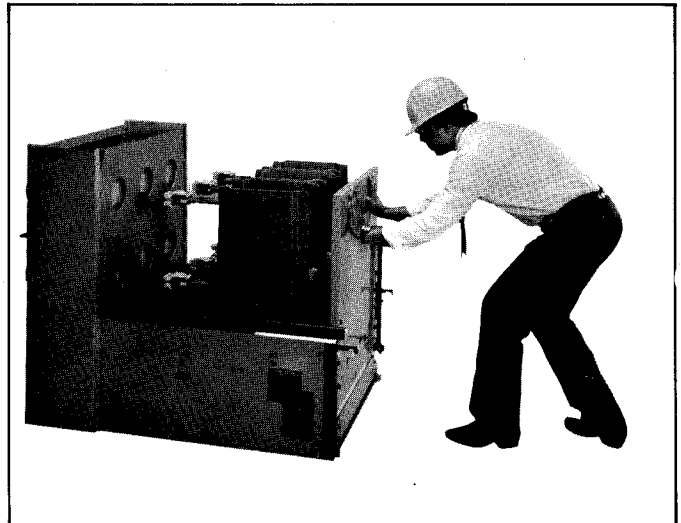
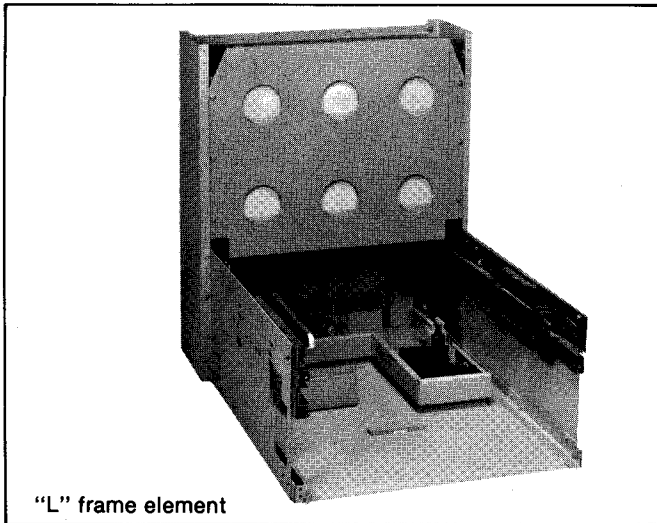
# POWER/VAC "L" and Box Frame Elements

POWER/VAC "L" and Box frame elements are designed for use by OEM switchgear builders who require greater flexibility in line-up configuration than is possible with the full height, full depth frame (95" x 94"), as well as by system builders needing a medium voltage breaker in equipment other than metalclad switchgear.

The "L" and Box frames, which contain a complete breaker interface, are basic building block elements designed to house Type VBB POWER/VAC vacuum breakers in a wide variety of line-up configurations.

## Features:

- Configured to accept the roll-in Type VBB breaker, eliminating the need for a lift truck.
- Stationary primary disconnects in molded polyester support for Type VBB POWER/VAC vacuum breaker. Porcelain primary supports are available as an option.
- Grounded metal shutter mechanism to cover primary connections when breaker is racked out.
- Primary barrier is furnished in front of shutter.
- Racking mechanism for breaker includes interlocks, key locking and padlocking capabilities.
- Provision for main bus and/or outgoing connections on the rear side of the primaries.
- Ground shoe for breaker.
- Provision for stationary auxiliary switch (max. 10A, 10B contacts) and breaker position switch (max. 6A, 6B contacts).



In addition, the Box frame incorporates a wraparound enclosure to hold parts in alignment. Box frames may be stacked to create a two-high configuration.

## Type VBB POWER/VAC vacuum circuit breaker

- Identical to the Type VB breaker with the addition of a wheeled undercarriage which allows the breaker to roll into the "L" or Box frame element.
- Eliminates the need for a special lift truck.

## Options & Accessories

### Box frame options

- Blank
- 1200 amp breaker compartment
- 2000 amp breaker compartment
- 3000 amp breaker compartment
- Breaker storage
- PT or CPT rollout tray
- Fuse rollout tray

### Box or "L" units GE-assembled options

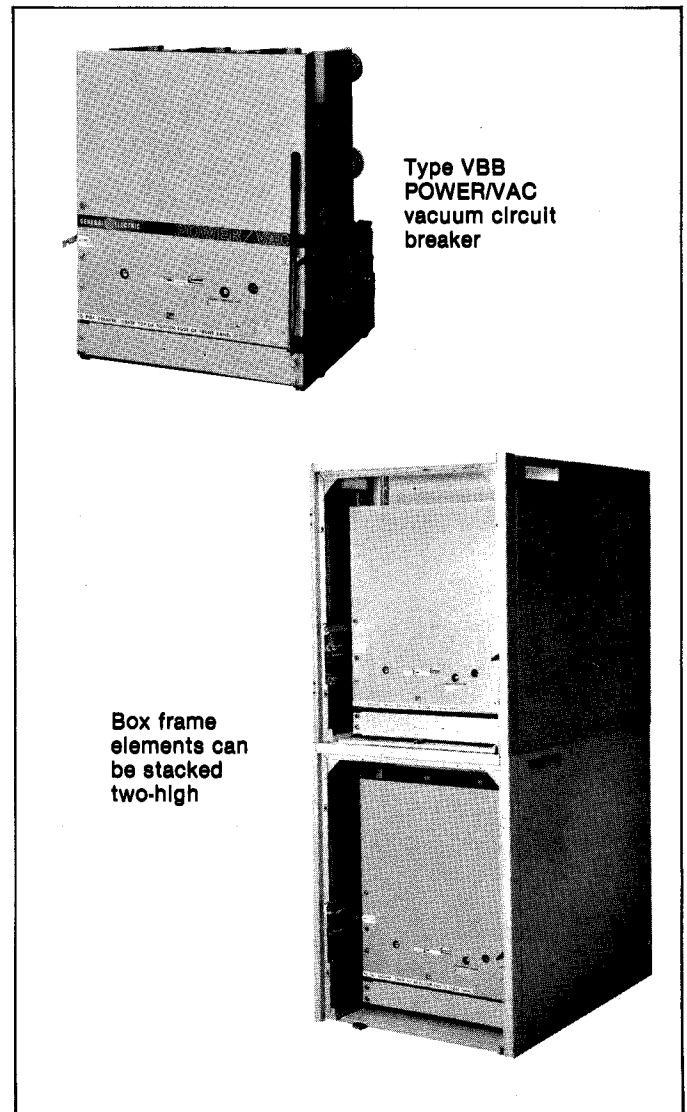
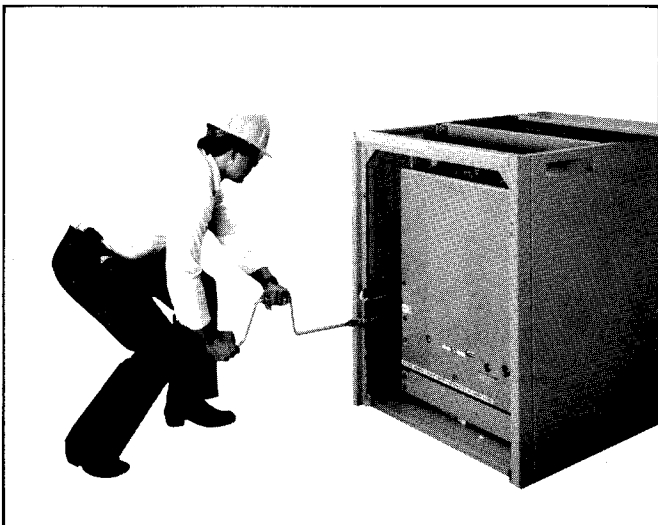
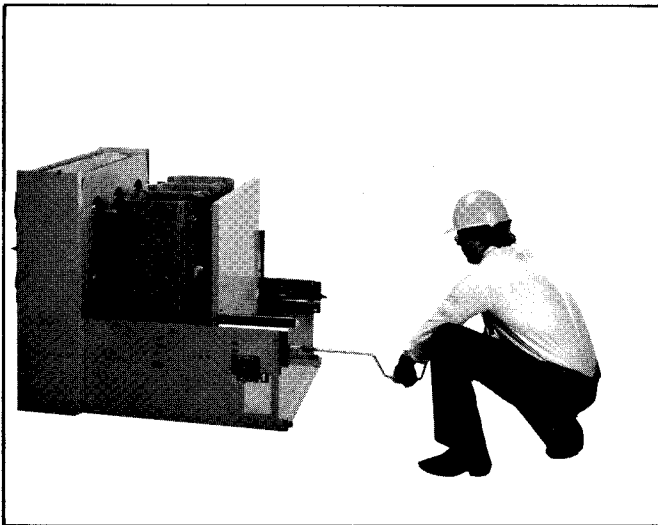
- Porcelain primaries
- Stationary auxiliary switch 3, 6, or 10 stage
- Position switch 3 or 6 stage

### Accessories

- Surge suppressors (3)
- Test cabinet
- Manual racking handle
- Remote racking operator
- Breaker lift truck
- DC high potential tester
- Standard primary boots
- AC capacitor trip device
- Direct acting u/v trip for VB breakers
- Breaker certified production test reports

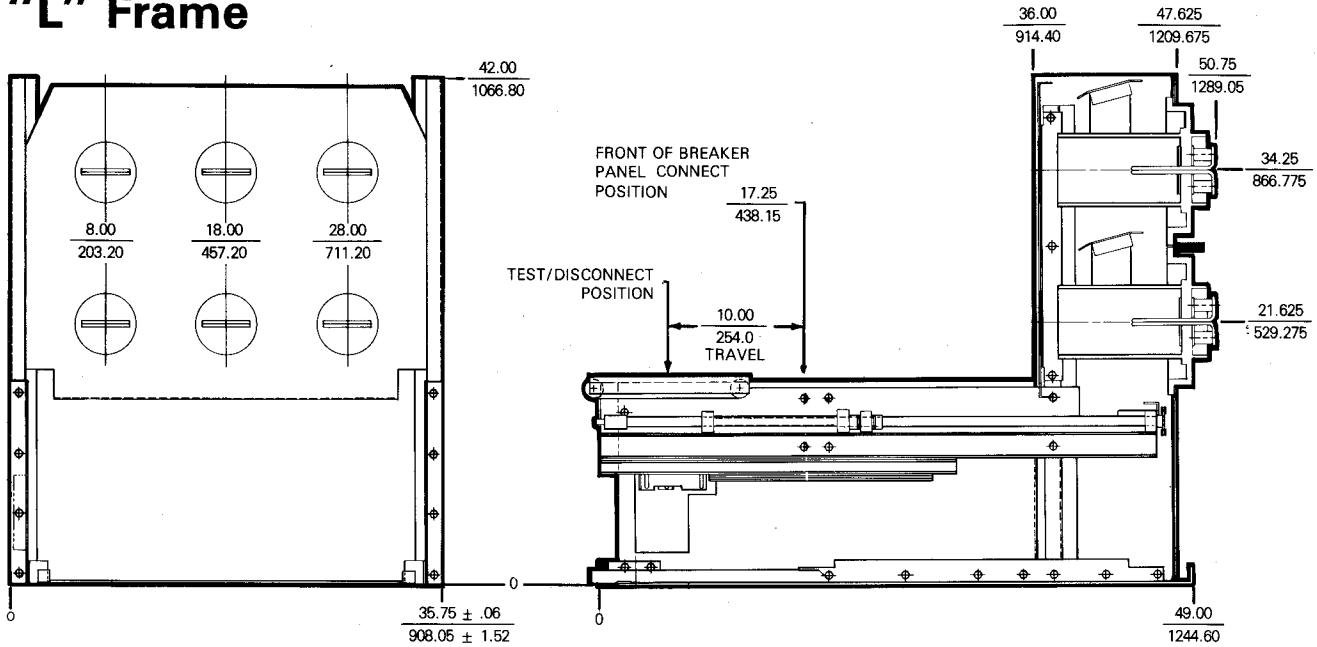
### "L" frame options

- 1200 amp breaker compartment
- 2000 amp breaker compartment
- 3000 amp breaker compartment



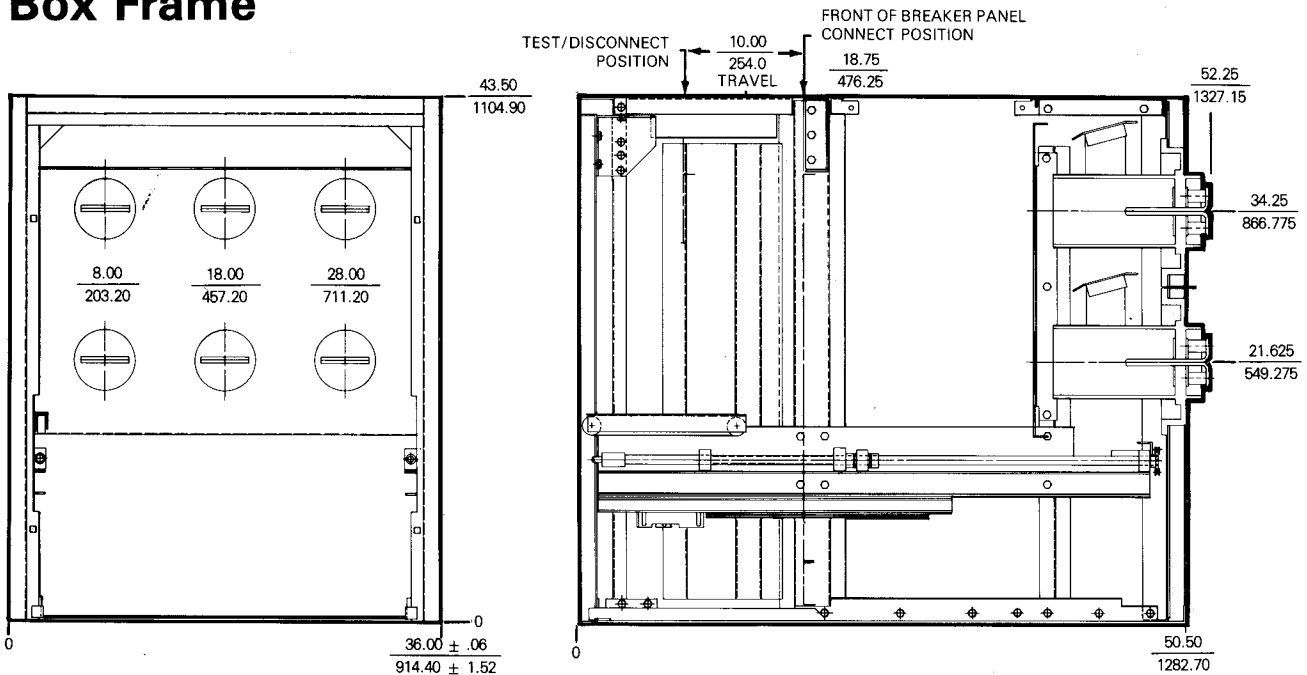
# Weights and Dimensions

## "L" Frame



Weight (without breaker): 850 lbs.  
Breaker weight: 750 lbs.

## Box Frame



Weight (without breaker): 1050 lbs.  
Breaker weight: 750 lbs.



**GE Electrical Distribution & Control**

General Electric Company  
41 Woodford Avenue, Plainville, CT 06062

© 1993 General Electric Company

GEA-11632B 0593 BLA