

GEH4567 INSTALLATION INSTRUCTIONS

BELL ALARM SWITCH ACCESSORY

For Types TED THED, TEC, TB1, THLC1, TLB1

Description

Provides remote circuit breaker trip indication using a single pole double throw switch actuated by the breaker mechanism.

NOTE: Bell alarm cannot be installed in left pole of circuit breaker models earlier than Jan 1, 1979 (date code 0901 *). Refer to factory if in doubt.

Installation

CAUTION: The breaker must be completely de-energized and disconnected from the electrical circuit, when the bell alarm is being installed. This is mandatory because the breaker must be in the ON position while the accessory is being installed.

1. Place the breaker in a **TRIPPED** position (handle at midpoint) by rotating trip button.
2. Remove cover mounting screws (4) and handle (Figure 2).

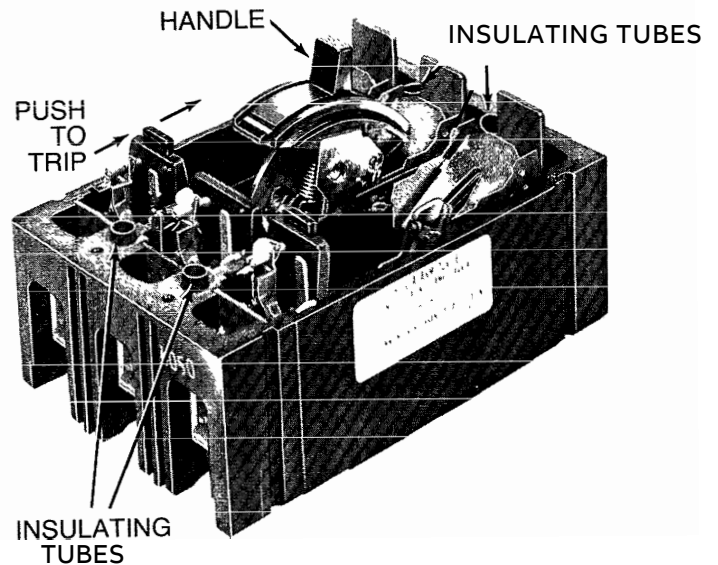
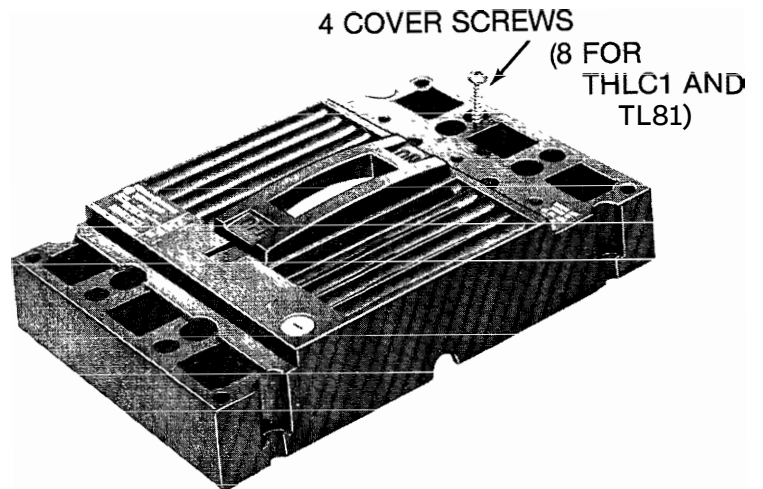


Figure 2

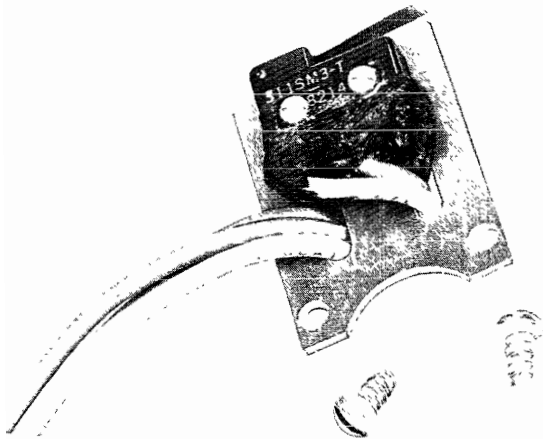


Figure 1

3. Note position of accessory mounting holes. (Figure 3).

4. Install accessory as shown (Figure 4).

5. Adjust switch lever so that it actuates switch within-dimension shown with circuit breaker in reset position. Trip the breaker by pushing trip bar forward. Switch should actuate. If not, readjust. (Figure 4).

6. Make two notches in cover, one for lever clearance, and one for lead exit as shown in Figure 5. Affix identification label.

7. Replace handle and breaker cover; taking care not to pinch wires or switch lever between cover and case.

8. Check continuity of bell alarm switch as shown in Figure 6. Repeat Step 5 if necessary.

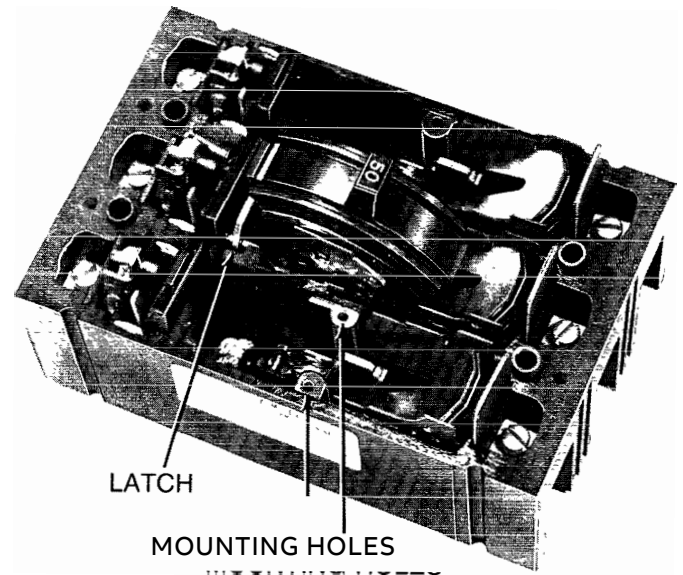


Figure 3

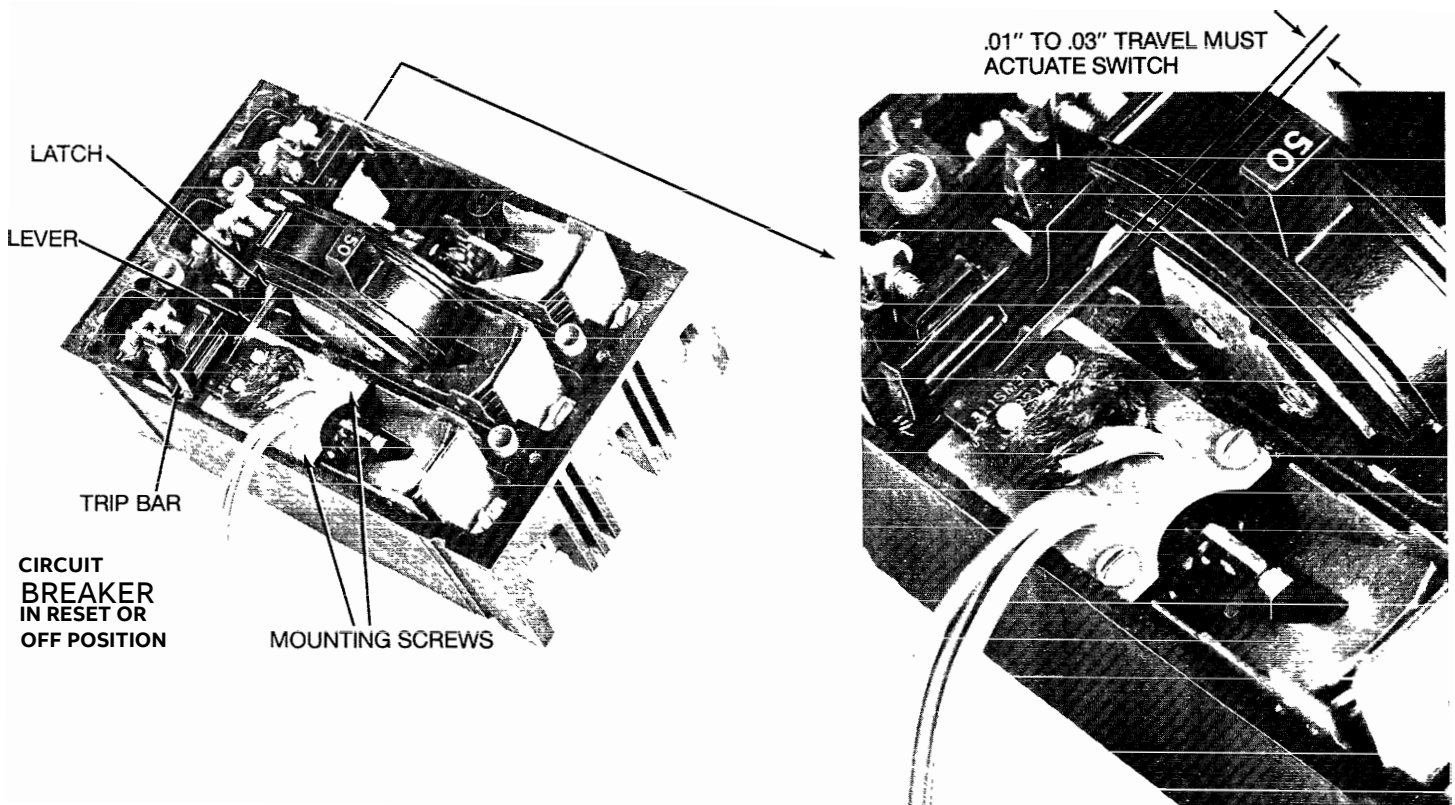


Figure 4

BREAKER TYPE	"A"	"B"
TED, THED, TEC, TB1	2.56	1.90
THLC1, TLB1	3.12	2.00

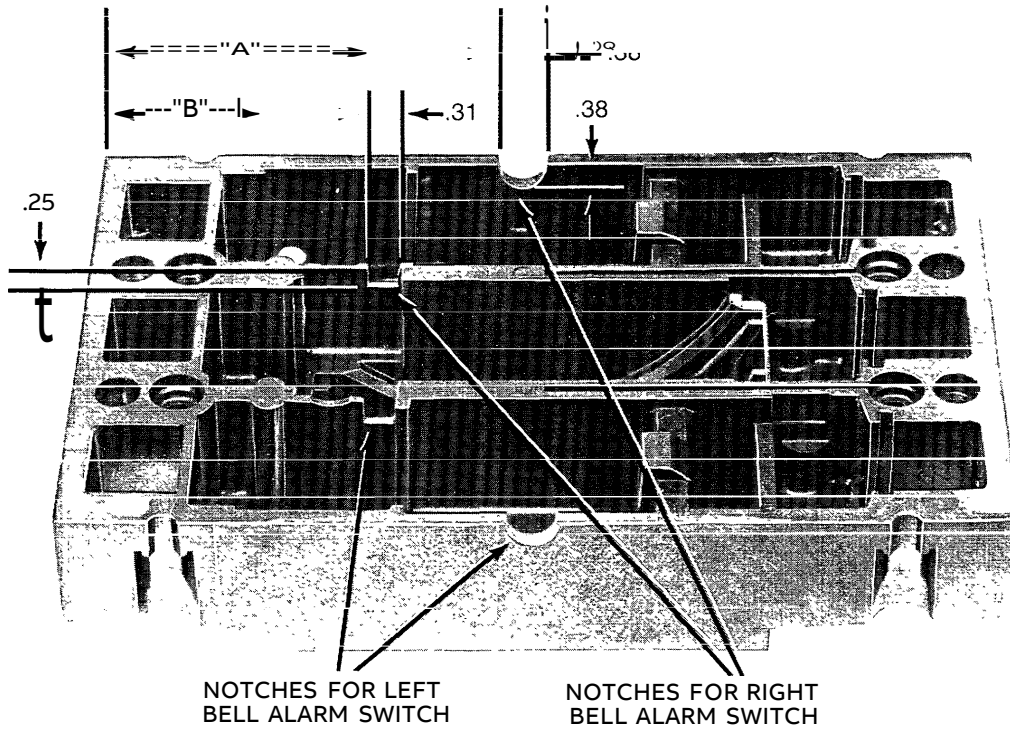


Figure 5

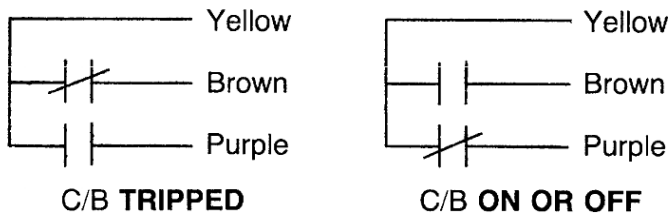


Figure 6

NOTE: UL listing is voided when the circuit breaker is modified to add an accessory.