



Modification Kits

Auxiliary Interlock Kits CR308X500 Series CR208X500 Series

Caution: Before installing in a nuclear application, determine that the product is intended for such use.

Warning: Disconnect power before installing or servicing.

Description

The auxiliary switch is designed for use on a General Electric 300- or 200-Line combination starter. It is available with either normally open, or normally closed, or normally open–normally closed contacts.

Ordering Information

| | |
|-----------------|-------------------|
| CR308X500A..... | 1 NO contact |
| CR308X500B..... | 1 NC contact |
| CR308X500C..... | 1 NO-1 NC contact |
| CR208X500A..... | 1 NO contact |
| CR208X500B..... | 1 NC contact |
| CR208X500C..... | 1 NO-1 NC contact |

Contact Ratings

AC–Single-pole Forms

| Volts | Make | Break |
|-------|------------|------------|
| 115 | 15 amperes | 40 amperes |
| 230 | 10 amperes | 20 amperes |
| 460 | 6 amperes | 10 amperes |
| 575 | 5 amperes | 8 amperes |

DC–Break Rating

| Volts | SPDT Forms | SPST Forms |
|-------|--------------|-------------|
| 115 | 0.50 amperes | 2.0 amperes |
| 230 | 0.20 amperes | 0.5 amperes |
| 600 | 0.02 amperes | 0.1 amperes |

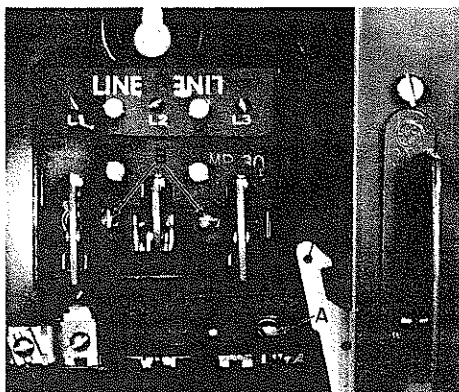
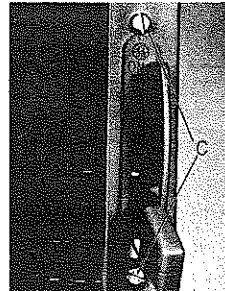


Figure 1.

Installation

1. Remove the driver plate from the operating handle assembly by first removing screw (A), shown in Figure 1.
2. Remove the two screws (B) holding the disconnect switch to the enclosure and remove the switch (Figure 1).



3. Remove the two screws (C) holding the handle assembly to the enclosure and remove the assembly (Figure 2).

◀ Figure 2.

4. Drill two holes 0.110 diameter, number 35 drill, spaced to mount the terminal board.
5. Mount the terminal board using two of the #6 thread-cutting screws (Figure 3).

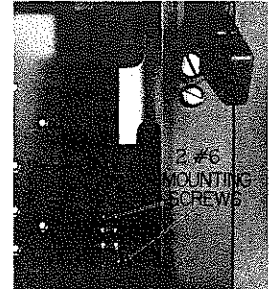
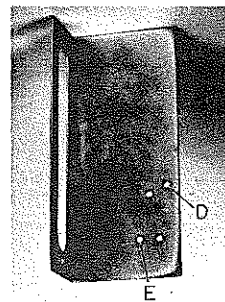


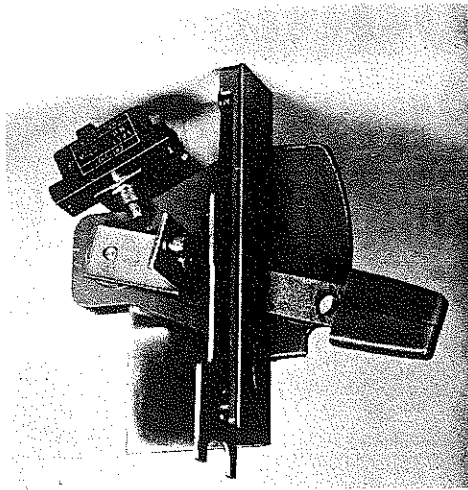
Figure 3 ▶

6. Wire two #14 gauge stranded wires (four on NO-NC form), approximately 18-inches long, to the auxiliary switch. See wiring diagrams on reverse side of this sheet.



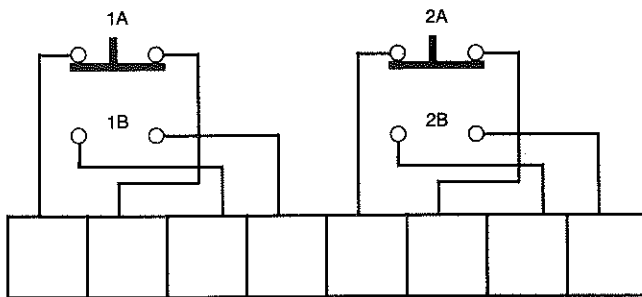
7. Assemble the auxiliary switch to the bracket. Use holes marked "D" (Figure 4) for 30, 60, and 100 ampere disconnect switches and TED circuit breakers. Use holes marked "E" (Figure 4) for the larger sizes of disconnect switches and circuit breakers.

◀ Figure 4.



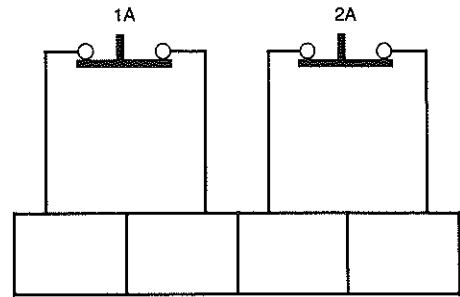
8. Place the auxiliary switch bracket over the operating handle assembly (Figure 5) and reassemble the handle, switch, and driver plate to the enclosure.
9. Fasten the wire from the auxiliary switch to the terminal board.

◀ Figure 5



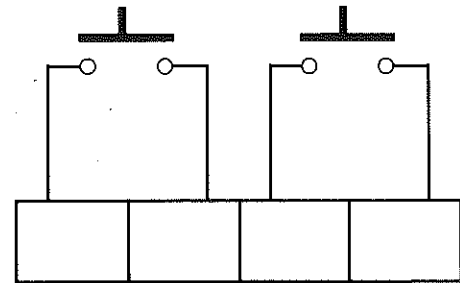
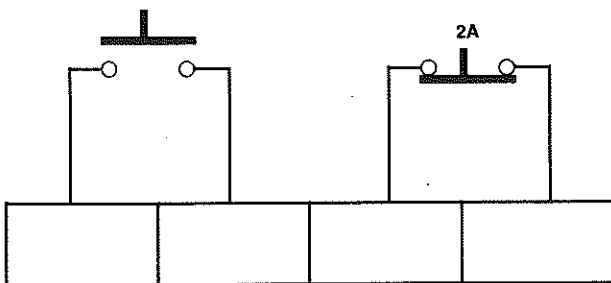
Terminal Board

Wiring Diagram for 2 NC and 2 NO form. Connections to 1A and 1b or to 2A and 2B must be same polarity.



Terminal Board

Wiring Diagram for 2 NC form.



These instructions do not purport to cover all details or variations in equipment nor to provide for every possible contingency to be met in connection with installation, operation or maintenance. Should further information be desired or should particular problems arise which are not covered sufficiently for the Purchaser's purposes, the matter should be referred to the nearest General Electric Sales Office.

For further information
call or write your local
General Electric distributor
or sales office.
Or write . . .

General Electric Company
41 Woodford Avenue
Plainville
CT 06062

GENERAL  **ELECTRIC**