



C-2000™ Control

CLXA01 Control Amplifier for C-2000 Contactors and Starters, 5–75 HP

Warning: Disconnect all power before installing or servicing this device, death or serious injury may result.

Caution: Before installing in a nuclear application, determine that the product is intended for such use.

Description

This CLXA01 control amplifier is designed for use with C-2000 Control IEC application-rated contactors and starters from 5 to 75 HP at 460V.

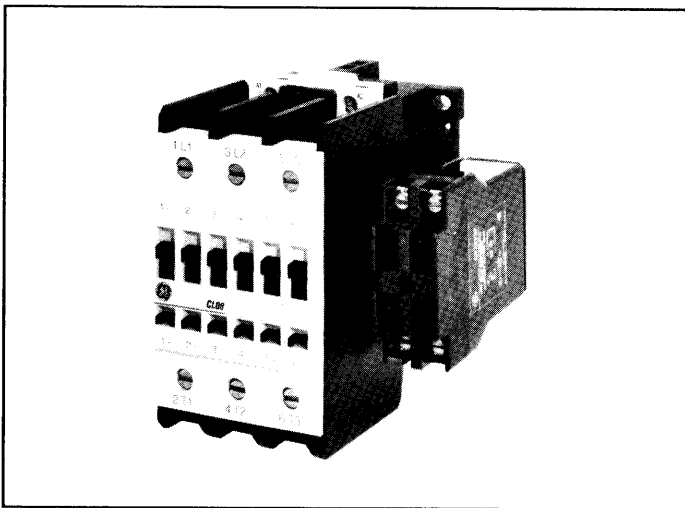


Figure 1. Contactor and amplifier

The CLXA01 control amplifier allows the low level 24 VDC output signal from a programmable logic control, energy management system, micro-processor, photoelectric cell, or similar control device to operate C-2000 Control starters and contactors while the Control coils operate at the line voltage. The control amplifier is UL Listed and CSA Certified. One form is available for all contactors, CL00 through CL10.

Mounting

The Control Amplifier mounts easily to the side of all CL contactors from CL00 through CL10. Simply insert the steel dovetails on the control amplifier into the dovetail slots on the right hand side of contactor and slide into place as shown in Figure 2.

Technical Data

Electrical Isolation Input–Output: 100 megohms or greater.

Signal Level Range

Input Voltage: 19.2–26.4 VDC.

Power Consumption: 0.8 Watts maximum.

Load

Contact Rating: C600

Maximum Make: 1800 VA.

Maximum Break: 180 VA.

Coil Voltage Range: 600 VAC.

Technical Data, Continued

Operation Time (Including contactor operating time)

Pick up: 35–40 milliseconds.

Drop out: 12–25 milliseconds.

Ambient Temperature:

–25°C to +65°C (–13°F to +149°F)

Average Expected Life:

3-million operations.

Other Control Amplifiers Available

Panel mount version, CR305X112P, see GEP-1260 for additional details.

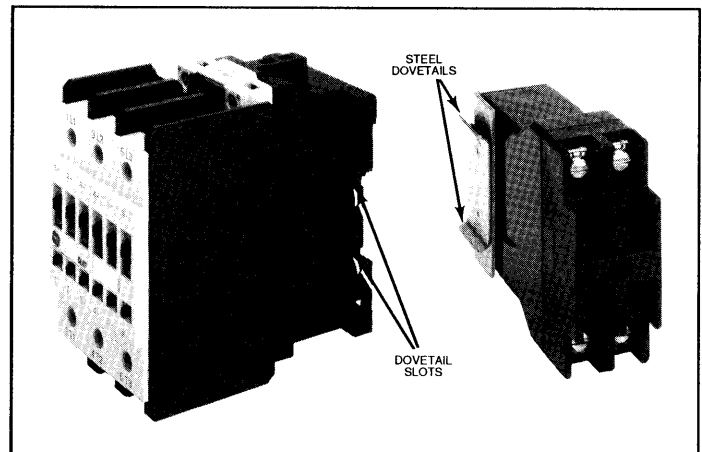
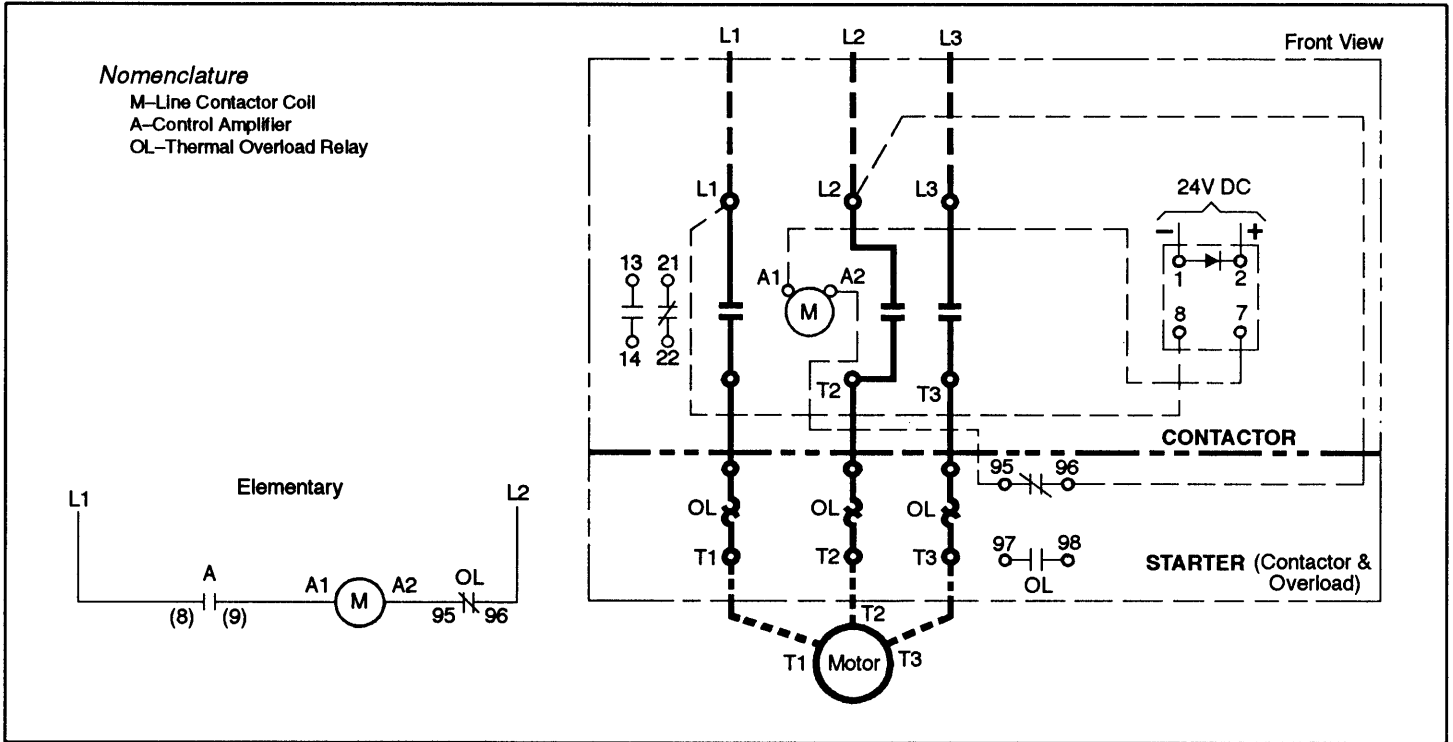


Figure 2.

Typical Wiring Diagram



These instructions do not purport to cover all details or variations in equipment nor to provide for every possible contingency to be met in connection with installation, operation, or maintenance. Should particular problems arise which are not covered sufficiently for the Purchaser's purposes, the matter should be referred to the nearest GE ED&C sales office.



GE Electrical Distribution & Control

General Electric Company
41 Woodford Avenue,
Plainville, CT 06062