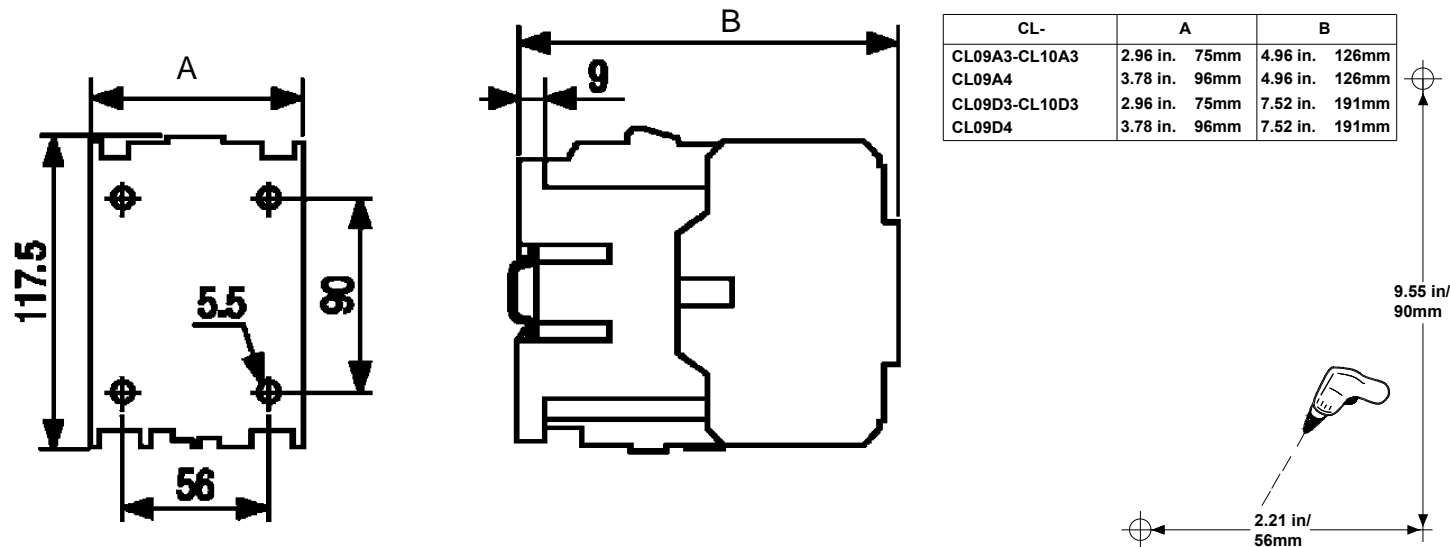




CL09-10 Contactor

WARNING: Disconnect power from source before installing, modifying or servicing.



CL-	A	B
CL09A3-CL10A3	2.96 in. 75mm	4.96 in. 126mm
CL09A4	3.78 in. 96mm	4.96 in. 126mm
CL09D3-CL10D3	2.96 in. 75mm	7.52 in. 191mm
CL09D4	3.78 in. 96mm	7.52 in. 191mm

IEC COUNTRIES

AC1						AC3						Three-phase						Single-phase		Starter Max. Full-load Amps				
P (kW)						P (kW)						Horsepower		kW		Horsepower								
220V 380V 500V						240V 415V 500V						Motor Voltage-60 Hertz		50 Hertz		Motor Voltage -60 Hertz								
220V	380V	500V	240V	415V	500V	220V	380V	500V	240V	415V	500V	200-208	220-240	440-480	550-600	380/415	115	230						
53	92	121	25	45	55	53	92	121	25	45	55	CL09	A E D	3 4	00	M R	25	30	60	75	45	7,5	15	80
53	92	121	30	55	65	53	92	121	30	55	65	CL10	A E D	3	00	M R	30	30	75	75	55	10	20	96*

USA & CANADA (UL, CSA)

Suitable for use on circuit capable of delivering not more than 10,000 RMS symmetrical amperes, 600 volts maximum when protect by H, J, K, RK5 class fuses, or a circuit breaker having an interrupting rating not less than 10,000 RMS symmetrical amperes, 600 volts maximum.

Use only white overload relay manufactured by GE POWER CONTROLS, serie RT.

*80 amps maximum at 600 volts

COIL

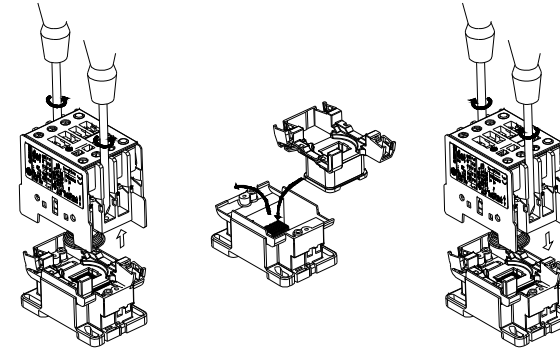
AC	50/60 Hz	1	2	3	4	5	6	7	8
		24V	42V	110V 115V	120V	220V	230V	240V	440V

DC	Voltage	WB	WD	WE	WG	WI	WJ	WN
		12V	24V	33V	48V	72V	110V	220V

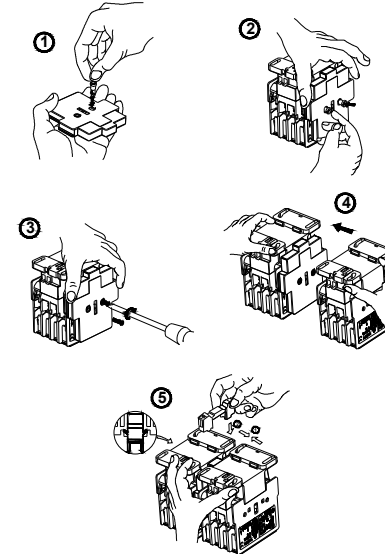
AC	50 Hz	C	D	E	F	G	H	I	J	K	L	M	N	R	S	T	U	V	W	X	Y	Z
		24V	32V	42V	48V				110V	127V			220V 230V	240V			380V 400V		415V	440V	500V	660V 690V
	60 Hz	24V			48V			110V	120V	120V		208V	220V	277V		240V	380V	480V	440V		600V	

DC	Voltage	B	D	E	F	G	H	I	J	K	N	P	R	T	X
		12V	24V	36V	42V	48V	60V	72V	110V	120V 125V	220V	230V	240V	250V	440V

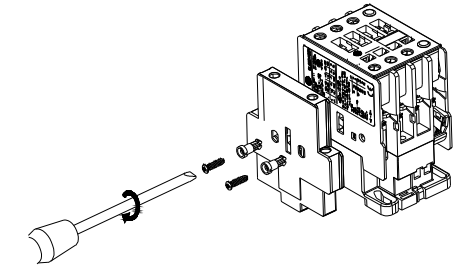
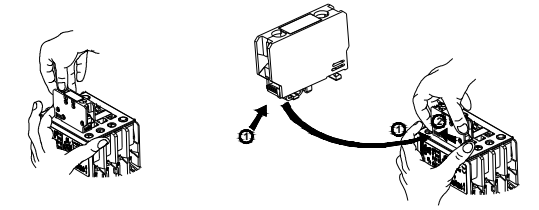
COIL CHANGE



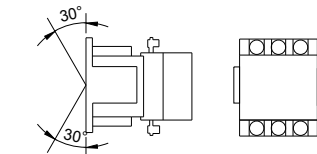
REVERSER



CONTACTS



MOUNTING

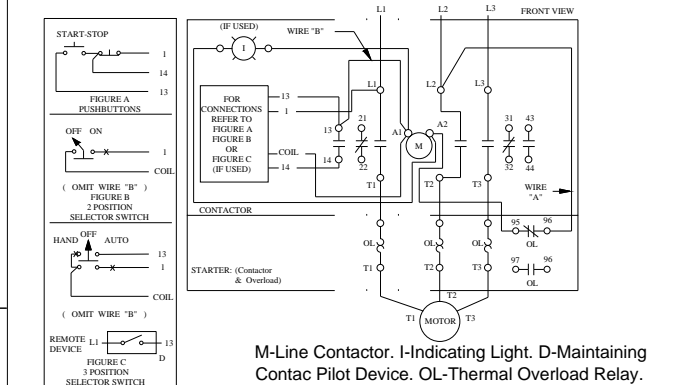


WIRING

Catalog Number	Max FLA	Overload Relay Model	Short Circuit Rating		Maximum Fuse Size		Maximum Breaker Size			Minimum Enclosure Volume (cu in)
			RMS Sym Amperes (a)	Volts Max (b)	Class (c)	Max Size (d)	Make (e)	Model (f)	Max Size (g)	
CL09L109	80	---	10,000	600	H,K,RK5,J or L	300A	---	---	---	420
CL10L110	104	---	10,000	600	H,K,RK5,J or L	300A	---	---	---	420
CL09L109	80	---	10,000	600	---	---	any	any	100A	420
CL10L110	104	---	10,000	600	---	---	any	any	100A	420
CL09L109	80	---	100,000	600	J	200A	---	---	---	420
CL10L110	104	---	100,000	600	J	200A	---	---	---	420
CL09L109	80	---	42,000	480	---	---	GE SEL	100A	---	420
CL09L109	80	---	25,000	480	---	---	GE SEH	100A	---	420
CL09L109	80	---	14,000	480	---	---	GE SED	100A	---	420
CL10L110	104	---	42,000	480	---	---	GE SEL	150A	---	420
CL10L110	104	---	25,000	480	---	---	GE SEH	150A	---	420
CL10L110	104	---	14,000	480	---	---	GE SED	150A	---	420
CL09L109	80	RT2,RT22	42,000	480	---	---	GE SEL	100A	---	420
CL09L109	80	RT2,RT22	25,000	480	---	---	GE SEH	100A	---	420
CL09L109	80	---	14,000	480	---	---	GE SED	100A	---	420
CL10L110	104	RT2,RT22	42,000	480	---	---	GE SEL	150A	---	420
CL10L110	104	RT2,RT22	25,000	480	---	---	GE SEH	150A	---	420
CL10L110	104	RT2,RT22	14,000	480	---	---	GE SED	150A	---	420

USA & CANADA

WIRING DIAGRAM



产品质量检验证书
Product Quality Inspection Certificate
该产品通过质量检测
The product passed Quality Inspection

原产地: 波兰
Country of Origin: Poland

制造商: GE Power Controls

工厂地址: ul Pilsudskiego 5
Factory address: 57-300 Klodzko (Poland)

NOTE: Additional over-current protection may be required. Refer to the National Electrical Code or local electrical code as required. Single phase applications: Single phase starters require all three overload heaters to be energized for proper operations. For single phase operations use separate conductor and connect overload load terminal T2 to contactor line terminal L3. Connect load to overload terminals T1 and T3. Connect incoming power to contactor line terminals L1 and L2.

These instructions do not purport cover all details or variations in equipment nor to provide for every possible contingency to be met in connection with installation operation maintenance. Should further information be desired or should particular problems arise which are not covered sufficiently for the purchaser's purposes, the matter should be referred to the GE Company.