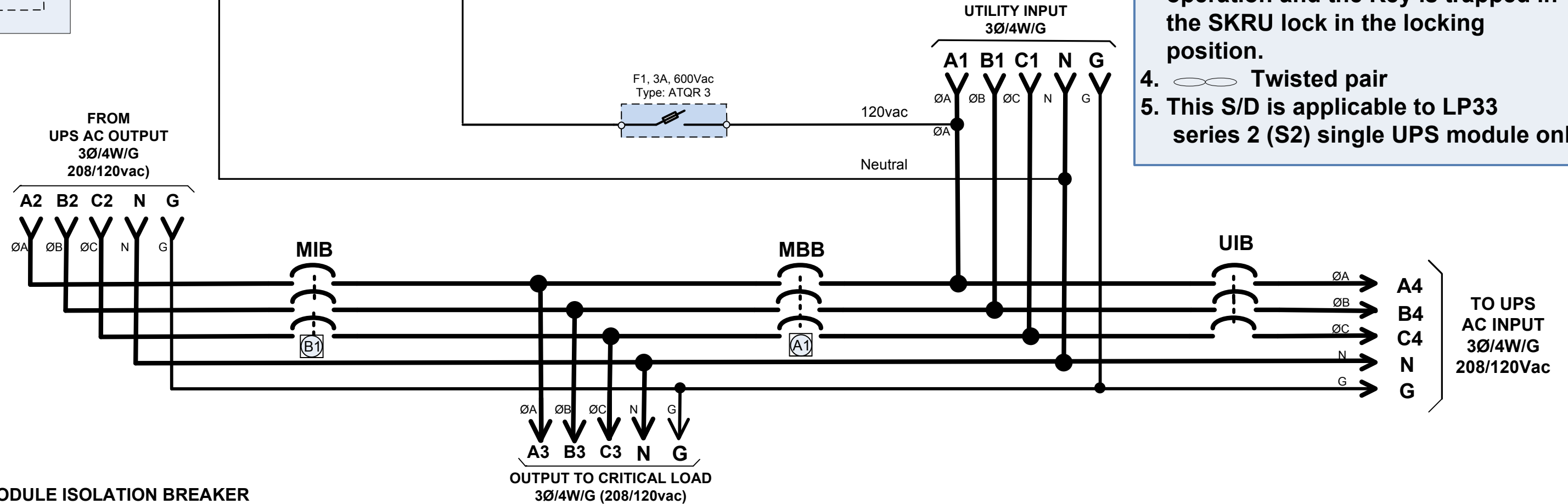
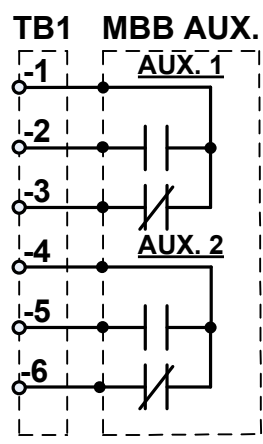
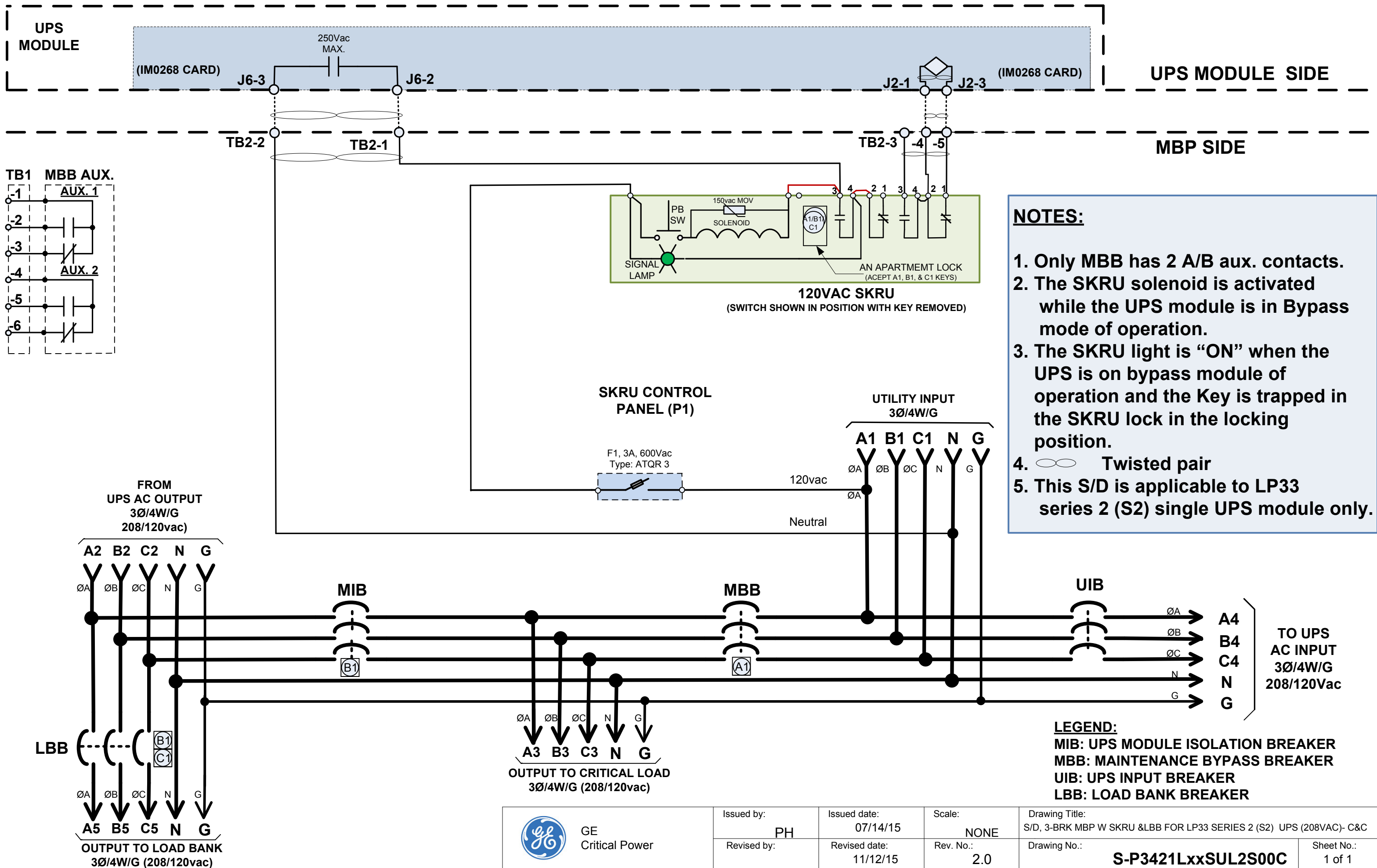


- NOTES:**
1. Only MBB has 2 A/B aux. contacts.
 2. The SKRU solenoid is activated while the UPS module is in Bypass mode of operation.
 3. The SKRU light is "ON" when the UPS is on bypass module of operation and the Key is trapped in the SKRU lock in the locking position.
 4. Twisted pair
 5. This S/D is applicable to LP33 series 2 (S2) single UPS module only.



LEGEND:
MIB: UPS MODULE ISOLATION BREAKER
MBB: MAINTENANCE BYPASS BREAKER
UIB: UPS INPUT BREAKER

	Issued by:	Issued date:	Scale:	Drawing Title:
	PH	07/14/15	NONE	S/D, 3-BRK MBP W SKRU FOR LP33 SERIES 2 (S2) UPS (208VAC)- C&C
	Revised by:	Revised date:	Rev. No.:	Drawing No.:
		11/12/15	2.0	S-P3421LxxSU02S00C
				Sheet No.: 1 of 1



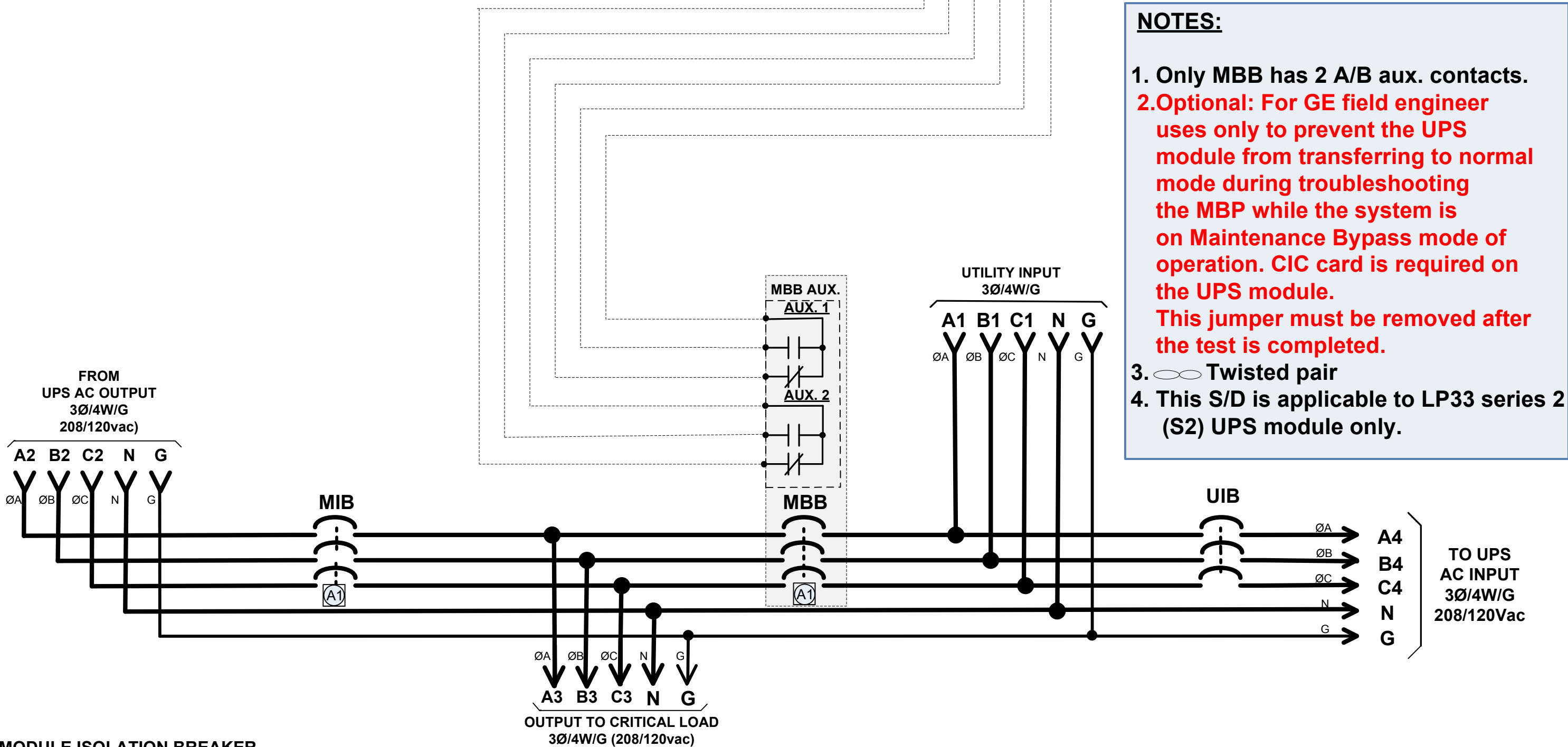
- NOTES:**
1. Only MBB has 2 A/B aux. contacts.
 2. The SKRU solenoid is activated while the UPS module is in Bypass mode of operation.
 3. The SKRU light is "ON" when the UPS is on bypass module of operation and the Key is trapped in the SKRU lock in the locking position.
 4. Twisted pair
 5. This S/D is applicable to LP33 series 2 (S2) single UPS module only.

LEGEND:
MIB: UPS MODULE ISOLATION BREAKER
MBB: MAINTENANCE BYPASS BREAKER
UIB: UPS INPUT BREAKER
LBB: LOAD BANK BREAKER

GE Critical Power	Issued by:	Issued date:	Scale:	Drawing Title:
	PH	07/14/15	NONE	S/D, 3-BRK MBB W SKRU & LBB FOR LP33 SERIES 2 (S2) UPS (208VAC)- C&C
	Revised by:	Revised date:	Rev. No.:	Drawing No.:
		11/12/15	2.0	S-P3421LxxSUL2S00C
				Sheet No.:
				1 of 1



- NOTES:**
1. Only MBB has 2 A/B aux. contacts.
 2. **Optional: For GE field engineer uses only to prevent the UPS module from transferring to normal mode during troubleshooting the MBP while the system is on Maintenance Bypass mode of operation. CIC card is required on the UPS module. This jumper must be removed after the test is completed.**
 3. Twisted pair
 4. This S/D is applicable to LP33 series 2 (S2) UPS module only.

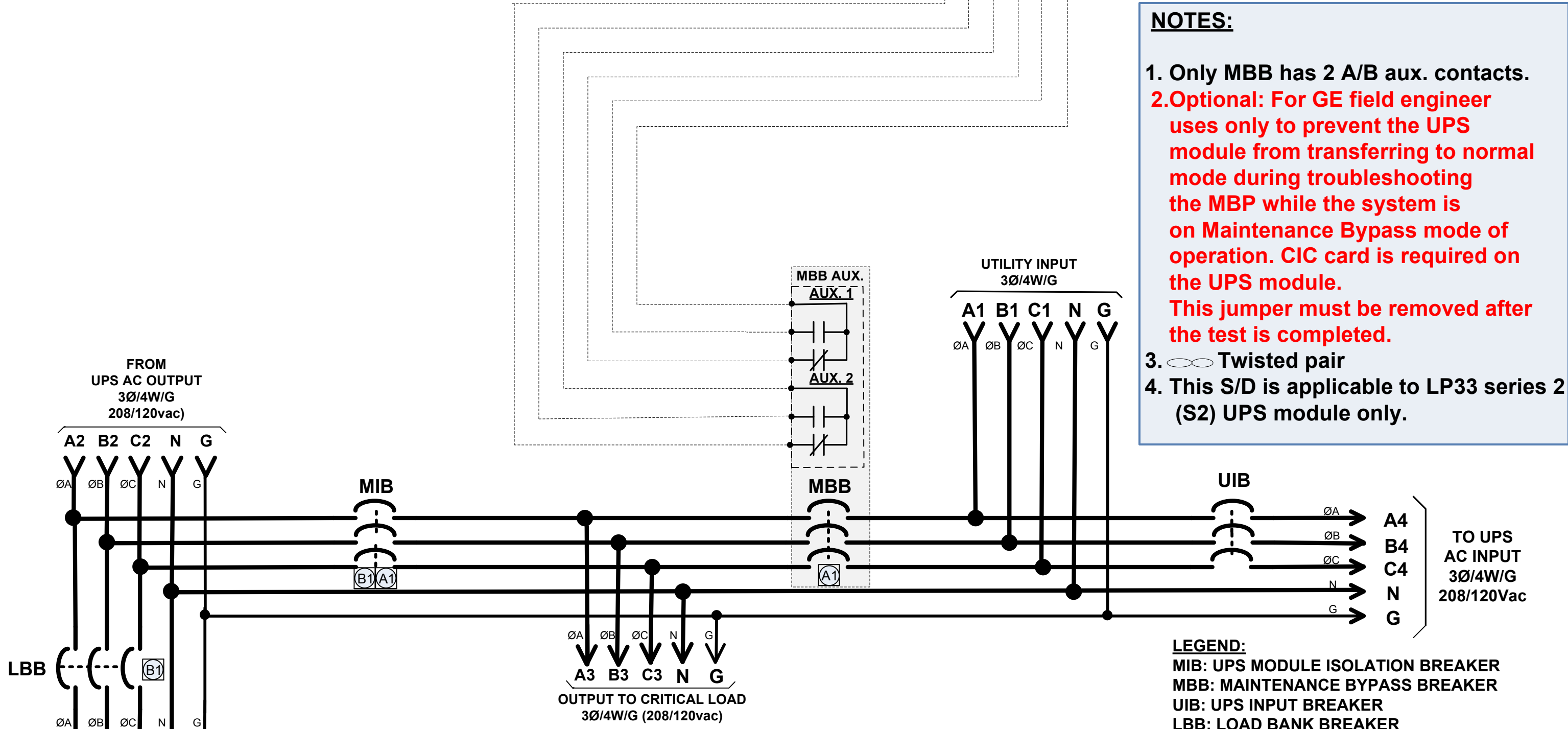


LEGEND:
 MIB: UPS MODULE ISOLATION BREAKER
 MBB: MAINTENANCE BYPASS BREAKER
 UIB: UPS INPUT BREAKER

	Issued by:	Issued date:	Scale:	Drawing Title:
	PH	07/14/15	NONE	S/D, 3-BRK MBP W KIRK KEY FOR LP33 SERIES 2 (S2) UPS (208VAC)- C&C
	Revised by:	Revised date:	Rev. No.:	Drawing No.:
			1.0	S-P3421LxxSU02K00C
				Sheet No.: 1 of 1

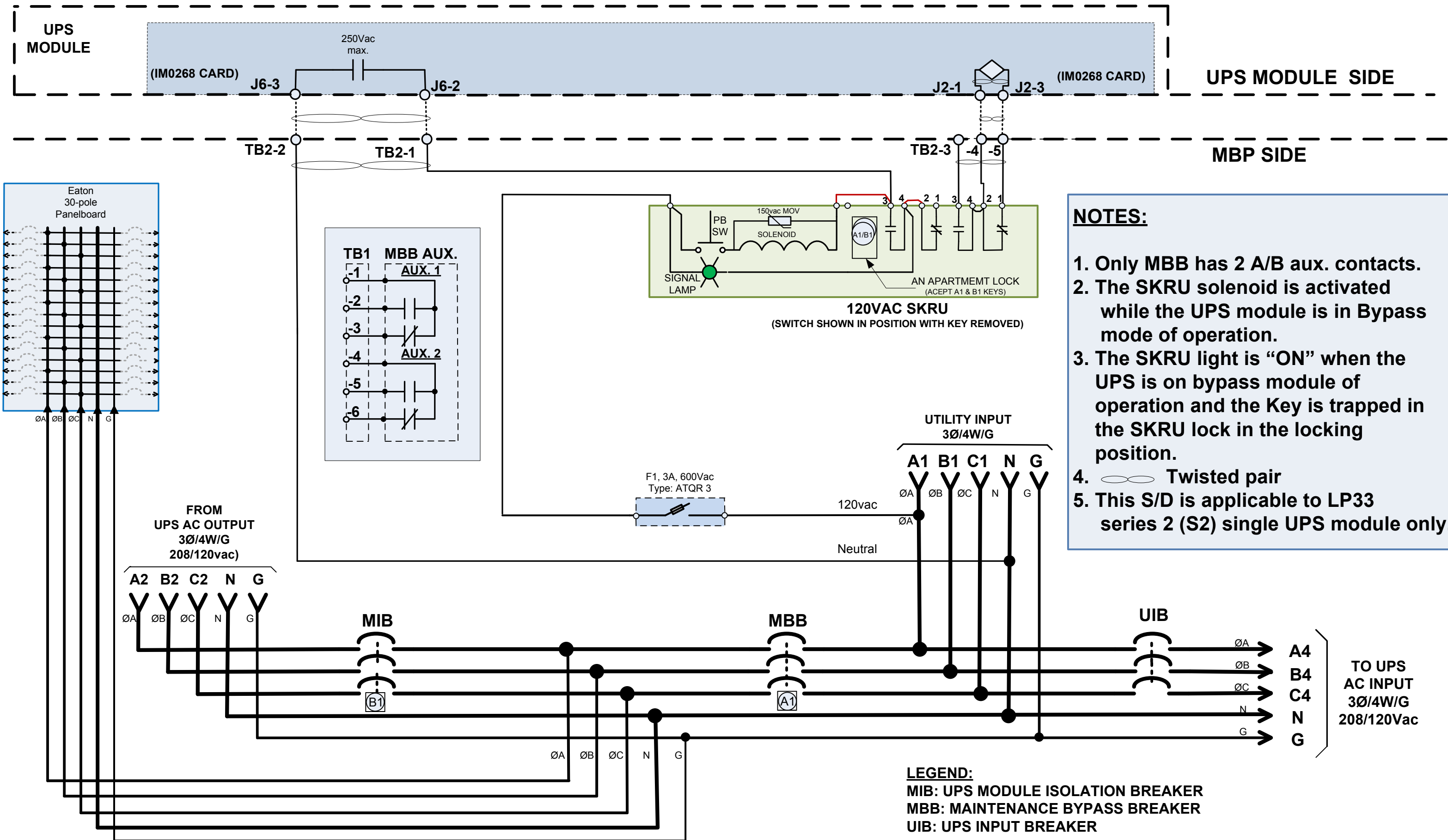


- NOTES:**
1. Only MBB has 2 A/B aux. contacts.
 2. **Optional: For GE field engineer uses only to prevent the UPS module from transferring to normal mode during troubleshooting the MBP while the system is on Maintenance Bypass mode of operation. CIC card is required on the UPS module. This jumper must be removed after the test is completed.**
 3. Twisted pair
 4. This S/D is applicable to LP33 series 2 (S2) UPS module only.



LEGEND:
MIB: UPS MODULE ISOLATION BREAKER
MBB: MAINTENANCE BYPASS BREAKER
UIB: UPS INPUT BREAKER
LBB: LOAD BANK BREAKER

GE Critical Power	Issued by:	Issued date:	Scale:	Drawing Title:
	PH	07/14/15	NONE	S/D, 3-BRK MBP W KK & LBB FOR LP33 SERIES 2 (S2) UPS (208VAC)- C&C
	Revised by:	Revised date:	Rev. No.:	Drawing No.:
			1.0	S-P3421LxxSUL2K00C
				Sheet No.: 1 of 1

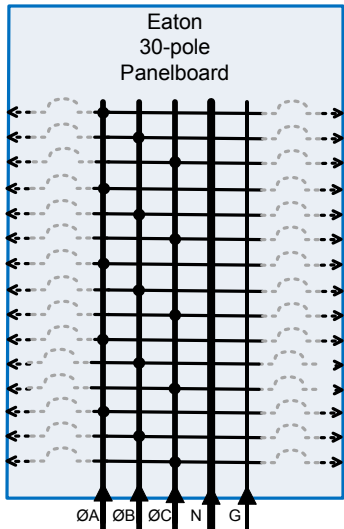
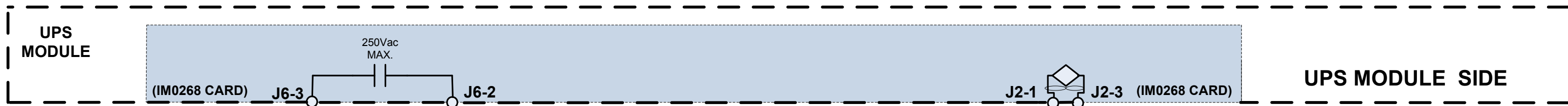


NOTES:

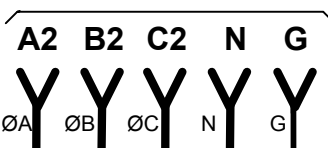
1. Only MBB has 2 A/B aux. contacts.
2. The SKRU solenoid is activated while the UPS module is in Bypass mode of operation.
3. The SKRU light is "ON" when the UPS is on bypass module of operation and the Key is trapped in the SKRU lock in the locking position.
4. Twisted pair
5. This S/D is applicable to LP33 series 2 (S2) single UPS module only.

LEGEND:
 MIB: UPS MODULE ISOLATION BREAKER
 MBB: MAINTENANCE BYPASS BREAKER
 UIB: UPS INPUT BREAKER

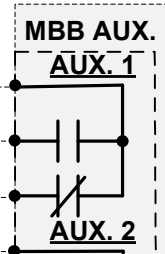
GE Critical Power	Issued by:	Issued date:	Scale:	Drawing Title:
	PH	07/14/15	NONE	S/D, 3-BRK MBP W SKRU & DP FOR LP33 SERIES 2 (S2) UPS (208VAC)- C&C
	Revised by:	Revised date:	Rev. No.:	Drawing No.:
		11/12/15	2.0	S-P3421LxxSU02SD3C
				Sheet No.: 1 of 1



FROM UPS AC OUTPUT
3Ø/4W/G
208/120vac



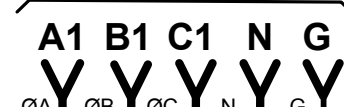
MIB



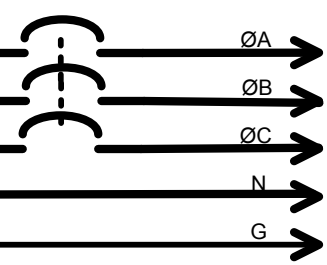
MBB



UTILITY INPUT
3Ø/4W/G



UIB



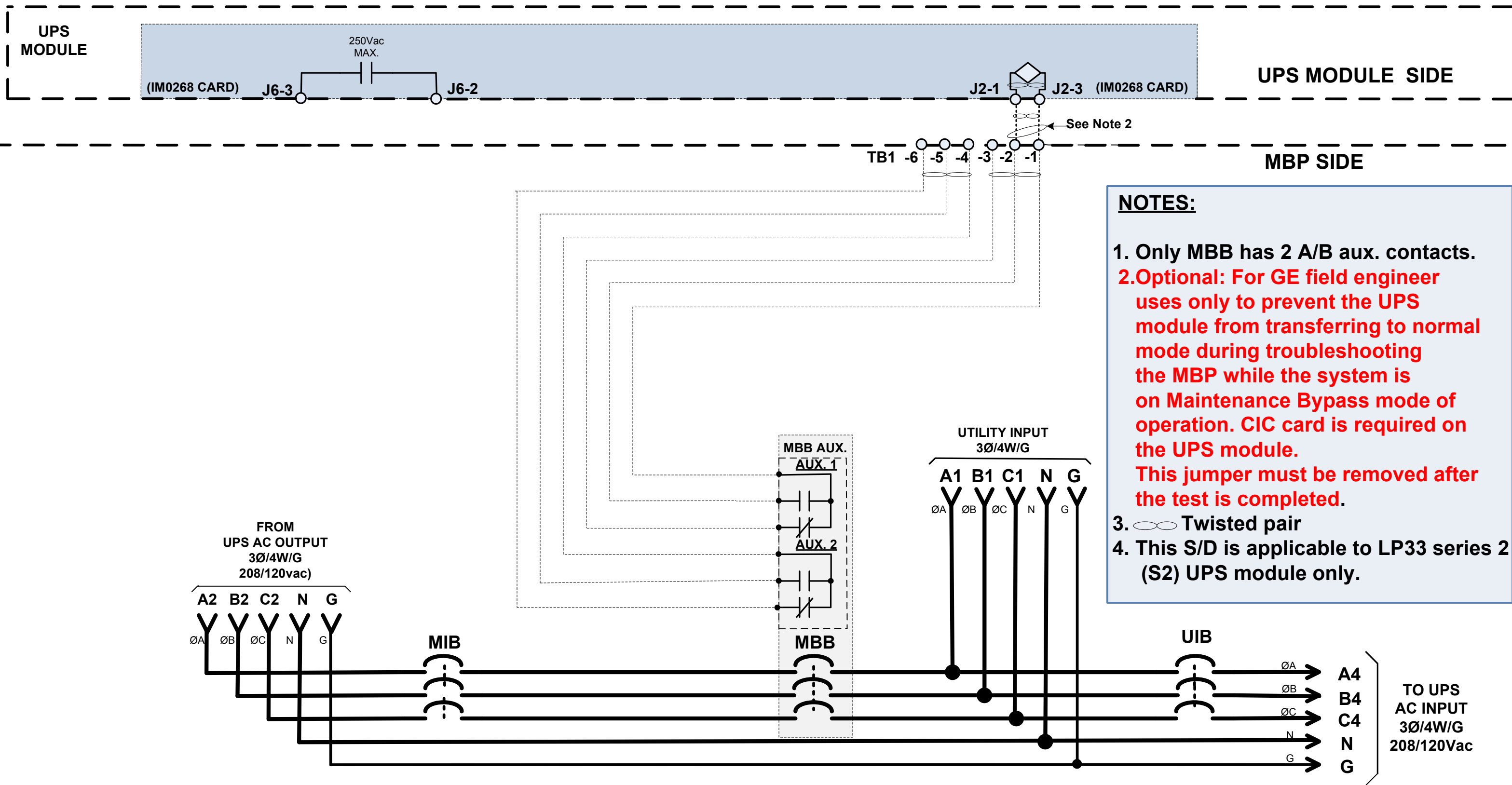
A4
B4
C4
N
G
TO UPS AC INPUT
3Ø/4W/G
208/120Vac

- NOTES:**
1. Only MBB has 2 A/B aux. contacts.
 2. **Optional: For GE field engineer uses only to prevent the UPS module from transferring to normal mode during troubleshooting the MBP while the system is on Maintenance Bypass mode of operation. CIC card is required on the UPS module. This jumper must be removed after the test is completed.**
 3. Twisted pair
 4. This S/D is applicable to LP33 series 2 (S2) UPS module only.

LEGEND:
MIB: UPS MODULE ISOLATION BREAKER
MBB: MAINTENANCE BYPASS BREAKER
UIB: UPS INPUT BREAKER



Issued by: PH	Issued date: 07/14/15	Scale: NONE	Drawing Title: S/D, 3-BRK MBP W KK & DP FOR LP33 SERIES 2 (S2) UPS (208VAC)- C&C
Revised by:	Revised date:	Rev. No.: 1.0	Drawing No.: S-P3421LxxSU02KD3C
			Sheet No.: 1 of 1



NOTES:

1. Only MBB has 2 A/B aux. contacts.
2. **Optional: For GE field engineer uses only to prevent the UPS module from transferring to normal mode during troubleshooting the MBP while the system is on Maintenance Bypass mode of operation. CIC card is required on the UPS module. This jumper must be removed after the test is completed.**
3. Twisted pair
4. This S/D is applicable to LP33 series 2 (S2) UPS module only.

LEGEND:
 MIB: UPS MODULE ISOLATION BREAKER
 MBB: MAINTENANCE BYPASS BREAKER
 UIB: UPS INPUT BREAKER

	Issued by:	Issued date:	Scale:	Drawing Title:
	PH	07/14/15	NONE	S/D, 3-BRK MBP W/O INTERLOCKED FOR LP33 SERIES 2 (S2) UPS (208VAC)- C&C
	Revised by:	Revised date:	Rev. No.:	Drawing No.:
			1.0	S-P3421LxxSU02000C
				Sheet No.: 1 of 1