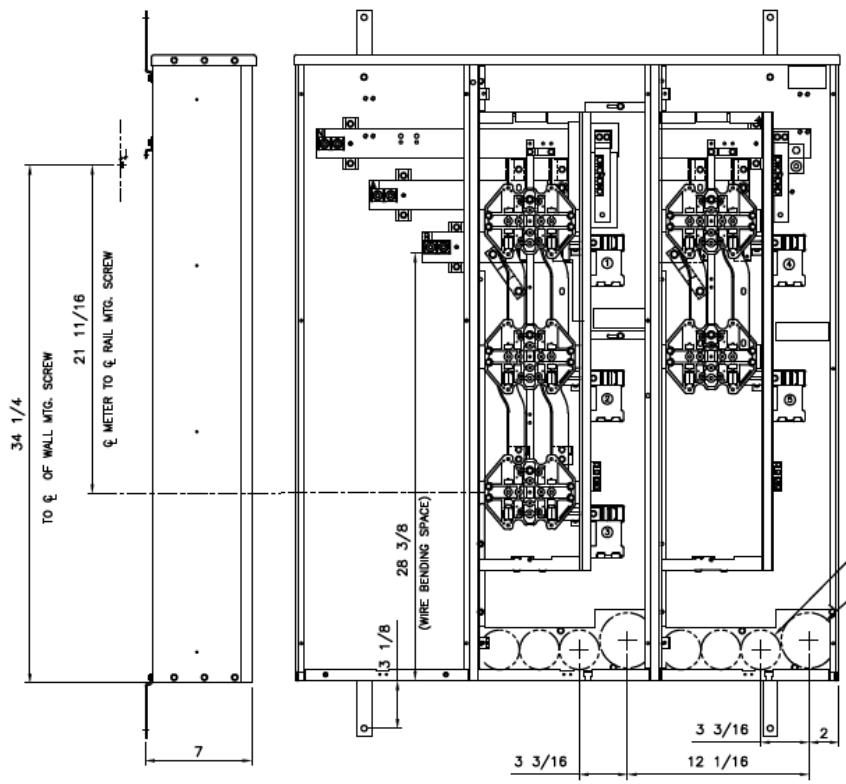


Side View

Front View

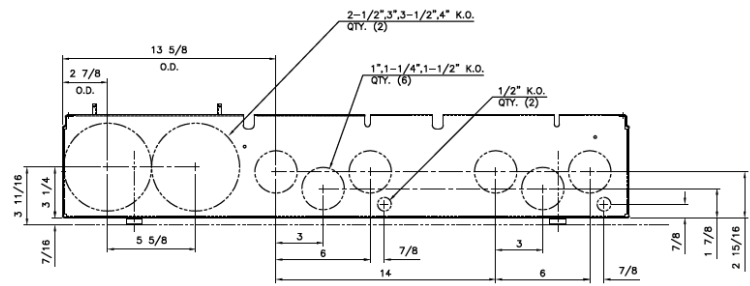
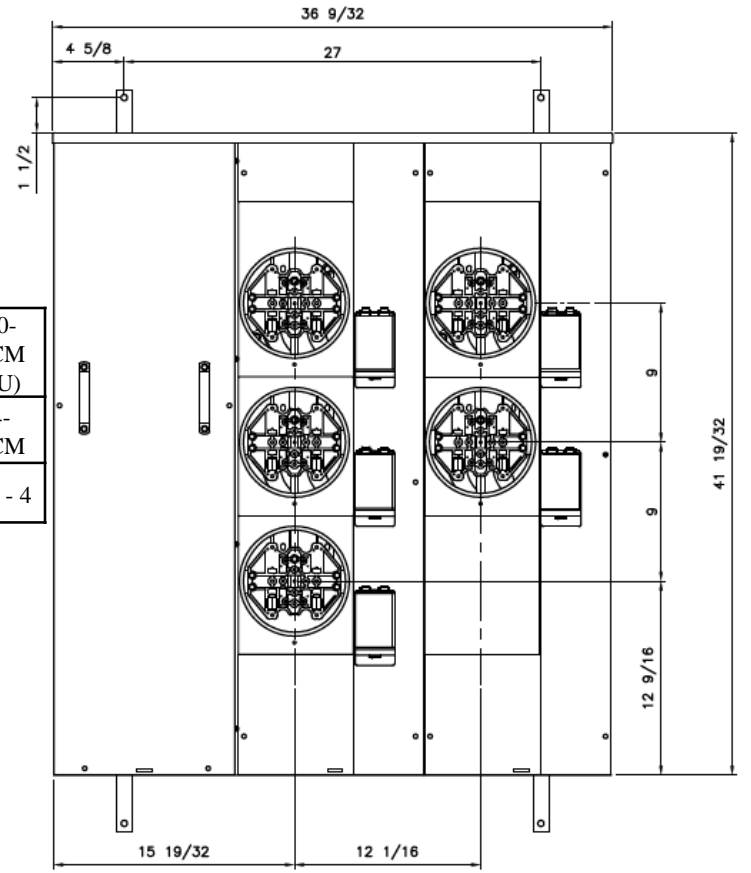
Front Layout View



Phase/Neutral Wiring Size	(2) 250-500MCM (AL/CU)
Service Ground Size	(1) #4-300MCM
Equip Ground Size	(1) #14 - 4

1" 1-1/4", 1-1/2" QTY.(6)

1" 1-1/4", 1-1/2", 2", 2-1/2" QTY.(2)



Bottom View



MINI MOD III – 600A MAIN LUG ONLY 1PH N3R ENCL  
(5) 125A RING SOCKETS BOTTOM ONLY FEED

REF NO	CAT NO	DWG DATE	REV #
96-5369	TMM6512R	1/8/2015	01