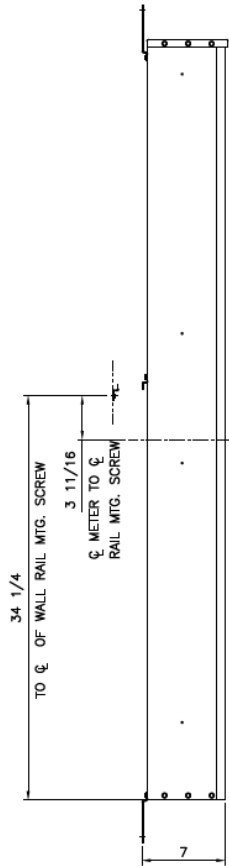
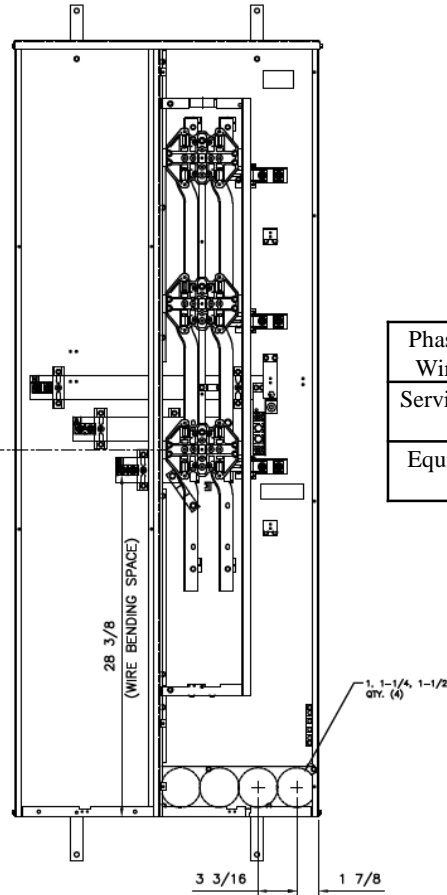


Side View

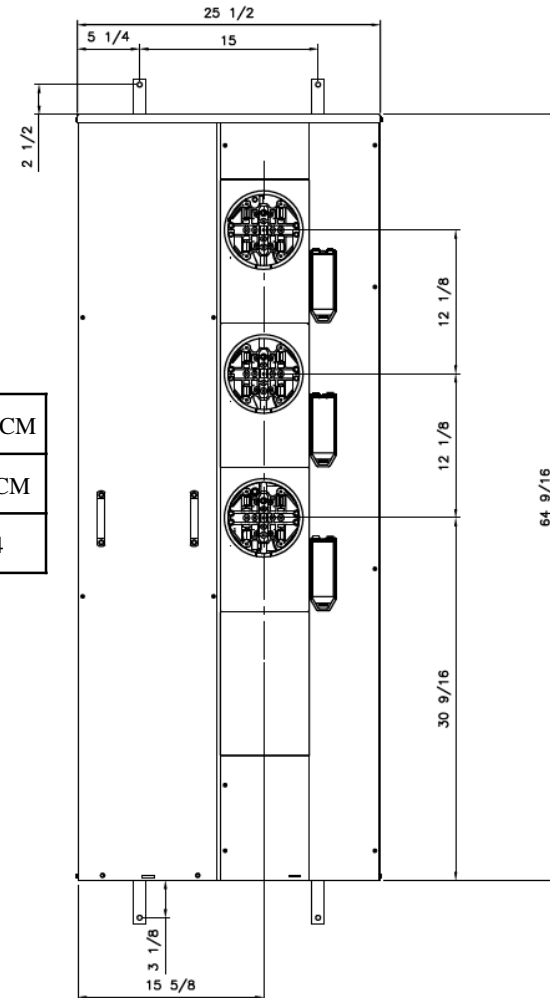


Front View

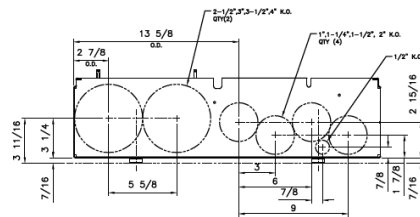


Phase/Neutral Wiring Size	(2) 250-500MCM
Service Ground Size	(1) #4-300MCM
Equip Ground Size	(1) #14 - 4

Front Layout View



Bottom View



MINI MOD III - 600A MAIN LUG ONLY 1PH N3R ENCL
 (3) 200A RINGLESS SOCKETS BOTTOM ONLY FEED

REF NO	CAT NO	DWG DATE	REV #
96-5372	TMMR6320R	1/8/2015	01