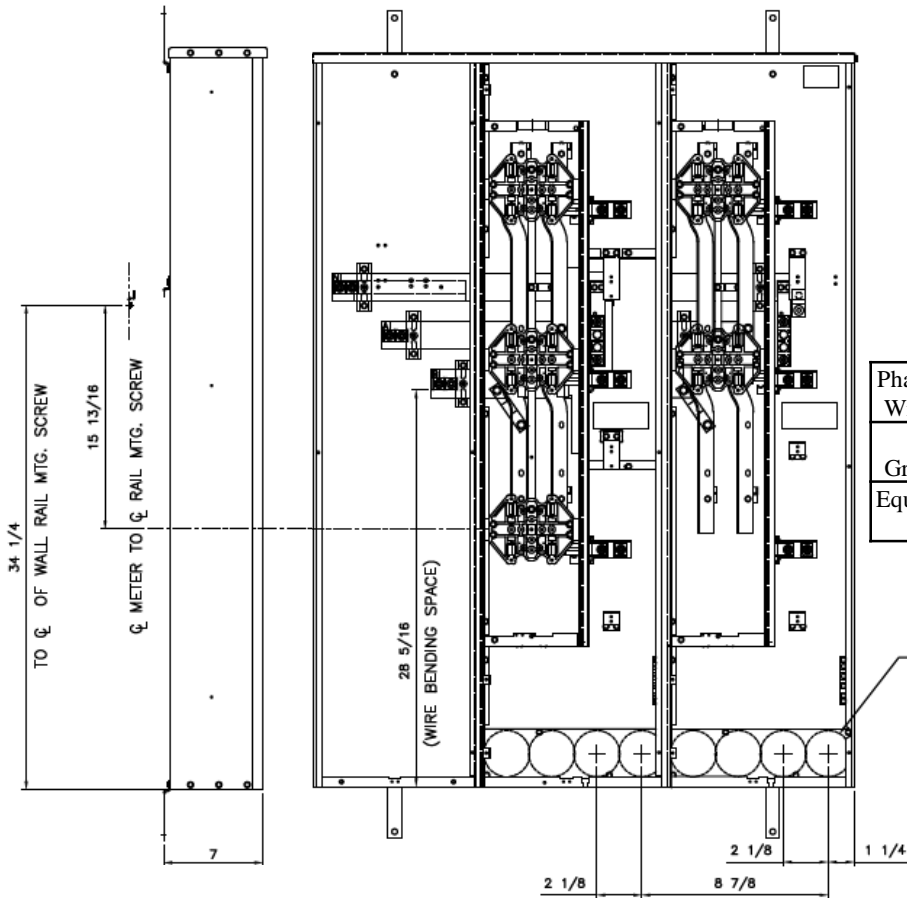


Side View

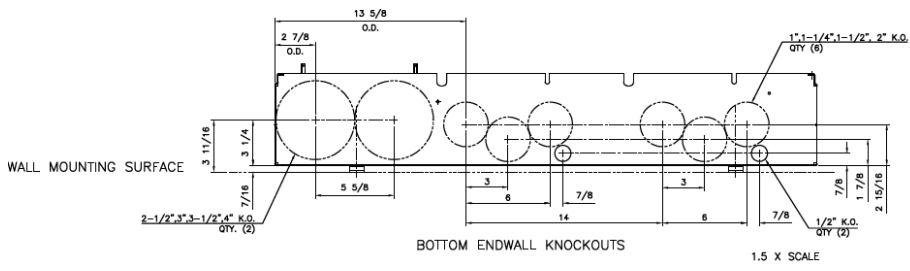
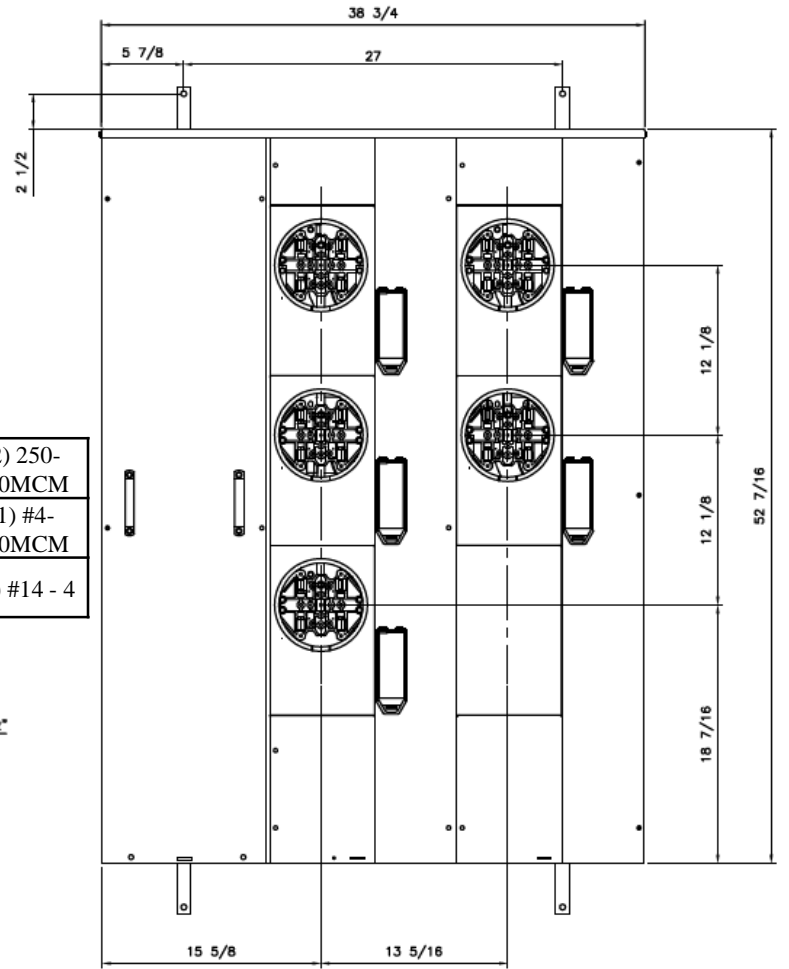
Front View

Front Layout View




Phase/Neutral Wiring Size	(2) 250-500MCM
Service Ground Size	(1) #4-300MCM
Equip Ground Size	(1) #14 - 4

1", 1-1/4", 1-1/2", 2"
QTY.(8)



Bottom View

 imagination at work

MINI MOD III – 600A MAIN LUG ONLY 1PH N3R ENCL
(5) 200A RINGLESS SOCKETS BOTTOM ONLY FEED

REF NO	CAT NO	DWG DATE	REV #
96-5374	TMMR6520R	1/8/2015	01