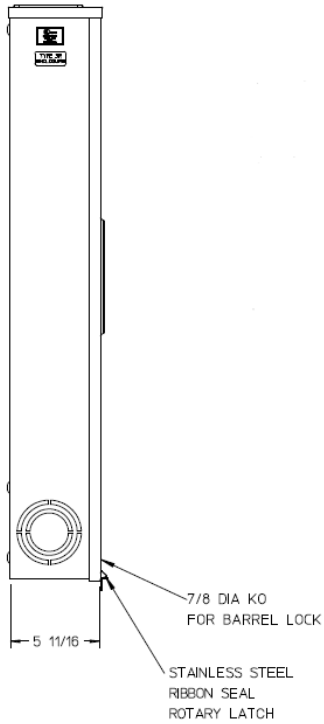
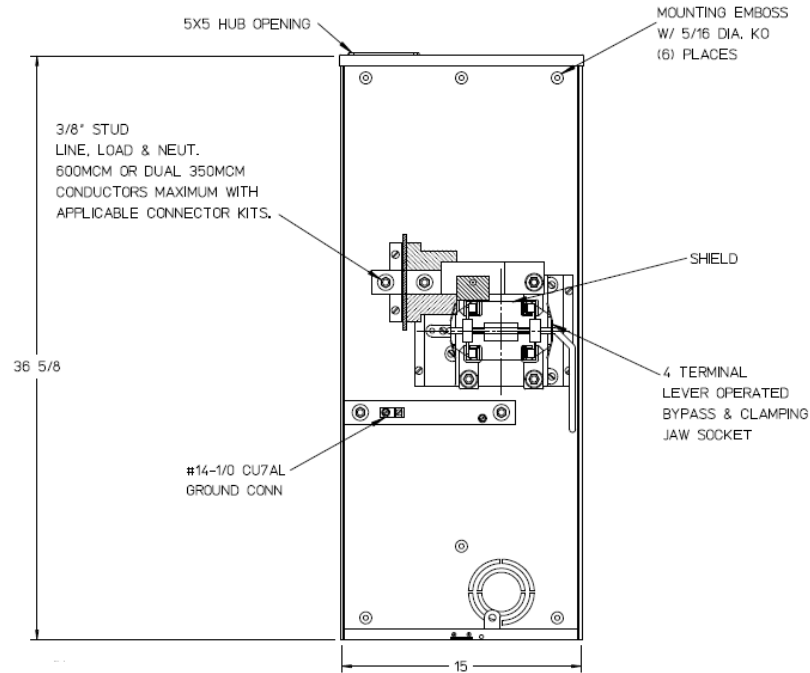


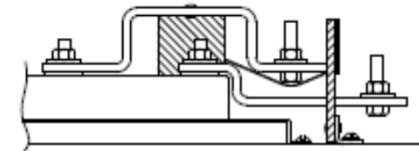
Left Side View



Front View Interior



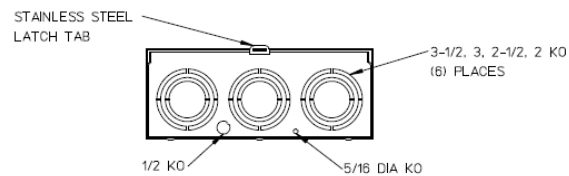
Line Bus Detail



Notes

- 1) FINISH: GRAY
- 2) CABINET: .080 ALUMINUM
- 3) 320 AMP CONTINUOUS, 600 VAC, 1 PHASE, 3 WIRE, 320 AMP BYPASS
- 4) FOR AN EXPOSED INNER-TITE OR BROOKS STANDARD LENGTH BARREL LOCK IN CONJUNCTION WITH BROOKS LOCK GUARD # 865 OR # 86505 WITH A PERMANENTLY WELDED BRACKET
- 5) GE LABEL ATTACHED TO THE END OF THE CARTON
- 6) TEMPORARY CARDBOARD METER OPENING COVER PROVIDED
- 7) GE LOGO STAMPED ON LOWER LEFT HAND CORNER OF THE FRONT

Bottom View



imagination at work

METER SKT-(1) 320A 600V 1P3W ALUM N3R 4-TERMINAL LARGE HUB OPN LEVER BYP AEP BARREL LK TRIPLEX GRD TOP/BOT FED

| CAT NO | DWG DATE | REV # |
|----------------|------------|-------|
| UAFTH4330TSHGE | 04/25/2016 | 02 |