

UPSentry Smart 2000

**Shutdown Management Software
for Mac OS X 10.1**

User's Manual

Table of Contents

Introduction.....	3
Installing/Removing UPSentry Smart 2000.....	4
User Interface: UPSentry Smart 2000.....	5
System Menu	6
UPS Menu.....	8

Introduction

The aim of **UPSentry Smart 2000** is to monitor your UPS and take care the power events for you. **UPSentry Smart 2000** has the ability to automatically shutdown your computer protected by an UPS when an extended power outage is occurred, for example.

UPSentry Smart 2000 provides the most useful information about the UPS. It is an easy-to-use program that furnishes you with all you need.

UPSentry Smart 2000, which runs in the background as an Unix daemon and communicates to the UPS to keep your computer stay away from any power problems and furthermore it gives you the most useful information about your UPS.

Note:

Due to a limitation in Mac OSX 10.1.x the program is unable to turn off the UPS following a UPSentry Smart 2000 shutdown of the Mac computer.

Installing/Removing UPSentry Smart 2000

System Requirements:

UPSentry Smart 2000 requires Mac OS X version 10.1.2 or higher.

Installing UPSentry Smart 2000:

1. Copy the UPSentry.tar to your Mac computer.
2. Double click the UPSentry.tar on Aqua interface or type “tar xvf UPSentry.tar” in the Terminal mode to extract it to the UPSentry_2 directory.
3. There is an installation file UPSentry.pkg in the UPSentry_2 directory, execute it to begin the installation procedure. Note that you need to restart the computer to load the UPS daemon after installation.

The **UPSentry Smart 2000** software is comprised of two modules:

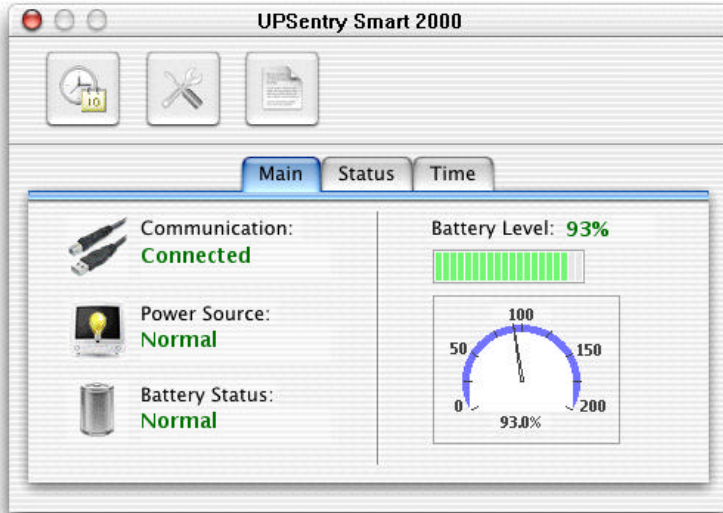
- o A UPS Monitoring Module(**upsd**), which runs as a background process(daemon) and communicates to the UPS.
 - o A User Interface Module, **UPSentry** for Aqua Interface, which enables you to configure **UPSentry Smart 2000** through the drop down menus and dialog boxes. It also allows you to monitor the UPS through the Main Screen.
4. After installation, UPSentry program files will be located in the directory */Applications/UPSentry*. We suggest you drag the **UPSentry** icon to the Dock.
 5. Shutdown and reboot your system to start the **UPSentry Smart 2000** daemon.

Removing UPSentry Smart 2000:

1. A shell script file *uninstall.command* is also provided in *UPSentry_2* directory that allows an administrator to stop all processes and remove all files associated with **UPSentry Smart 2000**.

User Interface: UPSentry Smart 2000

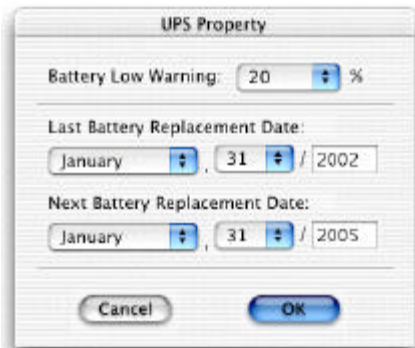
The **UPSentry Smart 2000** Main Screen is what you will see and work with. This screen allows you to monitor an UPS and display status.



System Menu

The system menu allows you to configure the **UPSentry Smart 2000** parameters. When you select the System menu from Main Menu bar, a drop down menu appears offering you the following menu options:

UPS Property



- Battery Low Warning: Allow you to adjust the battery low level. If the measured battery level from UPS is lower than the assigned value we'll treat it as a battery low event.
- Last Battery Replacement Date: Record last battery replacement date.
- Next Replacement Date: The date of next battery replacement.

Log Management

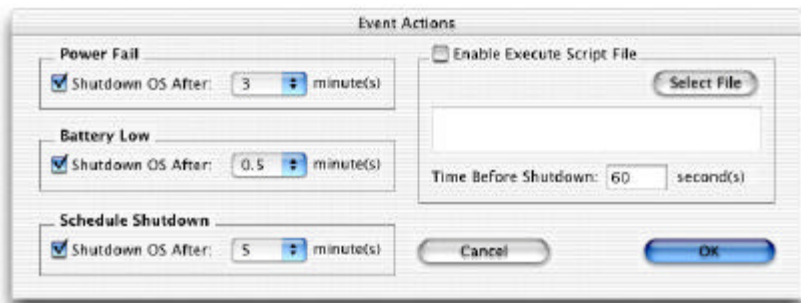
Allows **UPSentry Smart 2000** to preserve less than the assigned entries of event log.

Schedule

This function allows you to shutdown your Mac computer. Setting is based on day, week or month and up to a period of 2 years.

Event Actions

- a. Power Fail: This option allows you to adjust the OS shutdown delay time taken by UPSentry during a power failure.
- b. Battery Low: This option allows you to adjust the OS shutdown delay time taken by UPSentry during a battery low event.
- c. Schedule Shutdown: This option allows you to adjust the OS shutdown delay time taken by UPSentry when it reaches the schedule time.
- d. Enable Execute Script File: Allow you to run a shell script before computer shutdown.



Quit

Close the UPSentry, the UPS daemon “upsd” still stay in the memory.

UPS Menu

This menu allows you to view the event log and stop an ongoing shutdown procedure.

Event Log

This menu offers you the possibility of viewing past events.

Cancel Shutdown

Cancel the ongoing shutdown procedure.